



Dululu & District 2017/2027 Place Based Plan



The Dululu & District Place Based Plan is a controlled document.
 Please visit the Banana Shire Website at <http://www.banana.qld.gov.au/index.php/71> and ensure you have the latest copy prior to using or referencing the document.

AMENDMENT		DETAILS OF AMENDMENT	AMENDED BY
No.	Date		*Initials/Date
Draft 9	16/09/2011	Final Draft	
Final	23/11/2011	Endorsed by Council	PJC-23/11/2011
Reviewed	30/04/2013	Phill Casey & Melinda Petty	
Draft	07/10/2013		PJC- 07/10/2013
Final		Endorsed by Council	
Reviewed	08/11/2016	Phillip Casey	
	09/11/2016		
Final	24/05/2017	Endorsed by Council	

DISCLAIMER

The information that has been collected and entered into this document reflects the input from community members from Biloela and the Banana Shire. In adopting this plan the Banana Shire Council does not commit to completing all or any of the mentioned projects. It does however commit to working with the community and within its fiscal management systems to create sustainable communities of the future.

The following planning document was developed on behalf of the Banana Shire Council by Economic Development Services – Central Queensland.

© Banana Shire Council 2017

Contents

Introduction	4
PURPOSE	4
METHODOLOGY	4
STRUCTURE OF DOCUMENT	4
LOCATION	5
HISTORY	5
DESCRIPTION	5
EXECUTIVE SUMMARY OF KEY CENSUS RESULTS	5
Social Infrastructure	5
GOVERNMENT SERVICES.....	5
EDUCATION.....	5
COMMUNITY HEALTH & WELFARE SERVICES	5
COMMUNITY ORGANISATIONS.....	5
SPORT & RECREATION.....	6
SERVICE GROUPS.....	6
Achievements of Dululu	5
RECOGNISED COMMUNITY ACHIEVEMENTS	6
Future Directions	6
COMMUNITY IDENTITY & VISION	6
COMMUNITY PLAN	6
Community.....	6
Tourism.....	6
Roads.....	7
Water and Drainage	7
Communication	7
COMMUNITY PLANNING ENGAGEMENT AND FUTURE PLANNING	8
ACTION PLANS	9

Introduction

PURPOSE

This Place Based Plan is intended to help the community, elected representatives, service providers and government agencies better understand the diverse nature of the individual towns that make up the Banana Shire and the possible social, economic and environmental issues they may face now and in the future. Also, this plan aims to develop a long term strategy for the growth and development of the Banana Shire. This growth and development will be considered in a wide range of areas that are mentioned in this document. These areas such as Arts, Sports and Youth are considered to be integral to the development of the shire and its occupants.

METHODOLOGY

The Banana Shire Council has identified that a “Place Based” Community Plan is required in each of the Shire’s twelve towns. This will allow us to develop a positive trend regarding population growth as well as fulfilling the potential of the individual community’s economic and social future. From the development of the “Place Based” plans the Banana Shire Strategic Community Plan will be developed.

In summation, the consultation process will include:

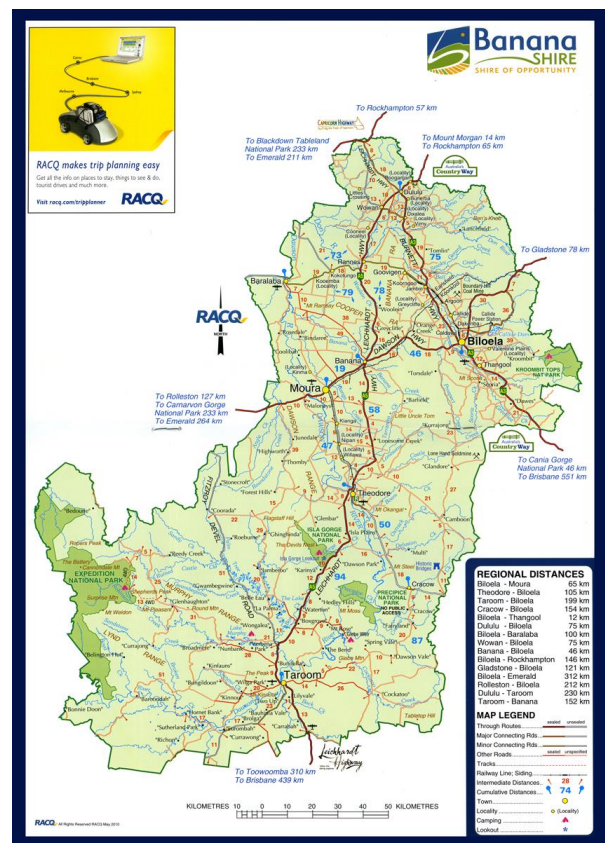
- Gathering of and referral to available ABS statistics;
- Discussion of related issues and policy with Government Departments and key stakeholder representatives;
- Meetings with representatives from regional organisations that have economic development roles;
- Attendance at meetings, networking or speaking to local leaders and community groups;
- Research/referral to a variety of historical literature;
- Research/referral to a variety of regional strategic planning/consultancies currently in progress;

- Community Engagement processes with residents in the Shire;
- Related Internet Search.

STRUCTURE OF DOCUMENT

This document is structured into a number of discrete parts, which are:

- Section 1 – This section provides a general introduction to the document
- Section 2 – Town Overview
- Section 3 – Social Profile
- Section 4 – Achievements of Dululu
- Section 5 – Future Directions



LOCATION

The small township of Dululu is located 72km north of Biloela, 70km southwest of Rockhampton and 609km northwest of Brisbane.

Please refer to the RACQ Trip Planner

http://www.racq.com.au/travel/Maps_and_Directions/trip_planner

HISTORY

Dululu, the Aboriginal word for "Soft", was formerly known as Bunerba but was renamed by the Railway Department in 1915 due to confusion with "Buneru" located 9km west of Wowan. Coaches travelled through Dululu and rested their horses overnight at Lanson's Lagoon, 11km along the Leichhardt Highway towards Westwood. This was the watering hole used by horse drawn coaches travelling to and from Rockhampton where horses were rested, watered and changed over.

In the early days cream was brought to Dululu's railway station three times a week on its way to the Wowan Butter Factory. During this time the hotel was being rebuilt after a fire completely gutted the original building in 1934.

DESCRIPTION

Dululu is located at the junction of the Burnett Highway and the Leichhardt Highway. This small but vibrant town caters for travellers through the Banana Shire and due to its prime location at the junction of these two popular highways, has a Driver Reviver facility in the local park.

Sports and soft leisure activities are in abundance with a cricket pitch and two full tennis courts situated in the town. The Dee River meanders along the outskirts of the town. Dululu is the centre of a diverse farming industry including stud cattle, horses, pigs, squab, agriculture, lucerne, grains, and citrus orchards.

EXECUTIVE SUMMARY OF KEY CENSUS RESULTS

In the 2006 Census there were 139 residents in the Dululu statistical area, which includes the town of Dululu. 49.6% were males and 50.4% were females. Of the total population in Dululu 0.0% were Indigenous persons,

compared with 2.6% Indigenous persons in Australia.

Social Infrastructure

Visit the following link and enter the town name for an up to date list and contact details of organisations and community groups. www.mycommunitydirectory.com.au/Queensland/Banana

Detailed census data is available via the ABS and Queensland State Government OSER.

www.abs.gov.au

www.oser.qld.gov.au

GOVERNMENT SERVICES

Many of the organisations that service Dululu are shared with Wowan such as:

- Banana Shire Council Mobile Library Service - Dululu
- Dululu Community Post Agency
- Wowan Post Office
- Dululu Rural Fire Service
- Police Service (Wowan)
- Queensland Ambulance Service - Wowan/Dululu
- Wowan/Dululu SES Support Group Inc.

EDUCATION

The educational needs of the Dululu community are met by the services found in Wowan:

- Wowan State School
- Wowan State School P&C group

Mount Morgan High School is also used for secondary school educational needs.

COMMUNITY HEALTH & WELFARE SERVICES

Dululu is supported by a range of health and welfare services:

- Dululu Progress Association & School of Arts Committee
- Wowan/Dululu Local Ambulance Committee

COMMUNITY ORGANISATIONS

Dululu proudly shares many of its organisations with the nearby town of Wowan:

- Dululu Progress Association & School of Arts Committee
- Wowan/Dululu Multi-Purpose Centre

SPORT & RECREATION

Dululu, despite its size, proudly maintains an impressive array of sporting and recreational organisations:

- Central Queensland Gliding Club
- Dululu Tennis Club

SERVICE GROUPS

The future of Dululu and the surrounding communities is proudly supported by the Wowan/Dululu Landcare branch.

Achievements of Dululu

RECOGNISED COMMUNITY ACHIEVEMENTS & ASSETS

People

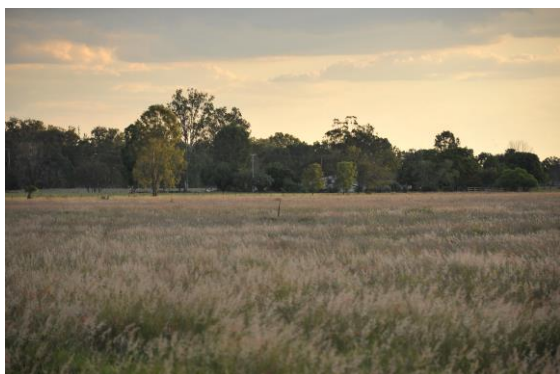
- Friendship
- Helpfulness

Services

- Can access services in surrounding areas

Community

- Peaceful
- Wildlife
- Progressive



Future Directions

COMMUNITY IDENTITY & VISION

Vision for Dululu

Today: Dululu is a vibrant village that affords its residents the lifestyle opportunity they desire. Dululu supports and promotes its partnership with Wowan in maintaining the health and community services including the primary school.

Future: Dululu sees its future as a rural village of choice.

COMMUNITY PLAN

Community

Areas that have been identified for improvement in the Dululu community are:

- Weed management, including educating the community
- Maintaining the presence of the Mobile Library

Tourism

Due to the combination of Dululu's existing facilities and location, the community has a great opportunity to embrace the potential for increased tourism through their town by improving various facilities such as:

- Directional signage to, in and around the town
- Maintaining and upgrading the Recreation Reserve
- Maintaining the public toilets

This would result in an increase in the number of tourists utilising the facilities and therefore spending money in the Shire.

Other improvements to the facilities in Dululu that could be undertaken are:

- Ensuring that local signs indicate locations of toilets and caravan dump sites
- The addition of a reserve water tank for the public toilets
- Ensuring the Recreation Reserve facilities are maintained.

Roads

Due to Dululu's close proximity to a major intersection of two highways, road safety is of great importance to the community. Actions considered to be a priority by the community are:

- The improvement of the intersection in the middle of the town. A way needs to be considered to slow down through traffic. A roundabout has been suggested.
- Rural roads in the area require maintenance and upgrading.

Water and Drainage

Other infrastructure concerns for Dululu are water and drainage. Water in the area requires consideration regarding:

- Maintenance of current systems
- Quality of the water

Water drainage in the area has been identified as an issue of major concern. Water constantly sits on the road and highway creating a breeding ground for mosquitoes so improvements to drainage are necessary.

Communication

A concern of the Dululu community is the lack of both mobile and internet coverage. Access to these services needs to be evaluated and a plan put in place to ensure their inclusion to the area.

Recent construction of a tower at Mt Eugene has made little impact on services in town. Work to complete the tower at Wowan needs to be carried out immediately



COMMUNITY PLANNING ENGAGEMENT AND FUTURE PLANNING

The ongoing process of updating and ensuring that the community owns the community plan will be undertaken following the timeline below.

Planning Chart



ACTION PLANS

Infrastructure	Activity/ Task	Council's Role	Stakeholders
Develop plans for the improvement and development of Dululu and the surrounding areas	Introduce and develop road safety initiatives and upgrade rural roads	Advocate Provider	TMR Banana Shire Council
	Improve intersection by investigating ways to slow traffic	Advocate	TMR
	Improve water drainage for both the town and local roads	Advocate Provider	TMR Banana Shire Council
	Mobile and internet coverage/access needs to be evaluated and a plan made to ensure areas inclusion	Advocate	Telstra NBN Co Dululu Progress Association & School of Arts Committee

Community	Activity/ Task	Council's Role	Stakeholders
Create partnerships between the community and Council to develop future planning to ensure that needs are met and opportunities to improve the area are embraced	Develop weed management and community education plans	Provider Advocate	Dululu Progress Association & School of Arts Committee
	Retain and improve Council services such as the Mobile Library	Provider	Banana Shire Council