



## Public Artwork Artist Call Out

Banana Shire Council is working with local communities to deliver a series of high quality, contemporary public art projects across the Banana Shire that capture the character of our communities. This call out is for one project: Lawgi Hall.

### **Our Project Objectives**

- Strengthen the sense of local pride in our towns and bring energy and colour to our landscapes
- To create cultural tourism assets for our community and visitors to enjoy
- To capture the local character of our people and places and the stories unique to our communities
- Create a sense of community ownership of the artworks
- Enhance local capacity by providing opportunity for local artist involvement and development
- Foster a sense of collective effort and collaboration between the various communities across the Shire

### **Project Description**

Location: Lawgi Hall (Burnett Highway, Lawgi)

The Lawgi Hall is situated at the top of the Lawgi Plateau, approximately 10 minutes drive from the small township of Thangool. The hall is used by the community and offers free overnight camping facilities, and this is the predominant use and reason for visitors to the hall. The wall designated for this specific artwork faces the Burnett Highway. It is passed by a significant amount of traffic daily.

Lawgi is considered 'Gateway to the Callide Valley' and for many locals the view from the plateau is one of their favourites and evokes a feeling of being 'home'.

### Artist Brief: Lawgi Hall Project

To re-create a new version of the previous Lawgi Hall bottle tree artwork (pictured below). The artwork was originally created by community members and became a much loved piece by both the local community and visitors. Due to necessary building upgrades, this wall required new cladding and consequently no longer exists. The key aspects of the artwork are:

- Sunset fade/gradient background
- Horizon line
- Bottle tree silhouette
- Mt Scoria (small pointed hill located at the door area)
- Representational aesthetic
- Sense of 'openness' and 'space'



Previous Lawgi Hall Artwork



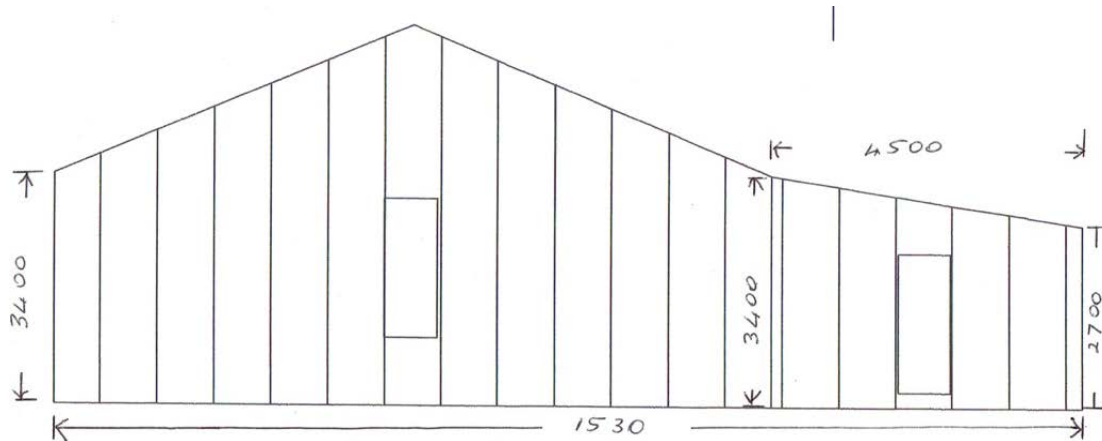
Lawgi Hall Currently

## Dimensions of the Hall

Length: 15.3m

Height: approx. 6.5 at highest point

Approx: 60-70m<sup>2</sup>



## Surface

Powder coated metal cladding, surface will be cleaned prior to painting

## Safety Requirements

- Ideal: Working Safely at Heights, Elevated Work Platform up to 11m, Public Liability Insurance
- Complete a Banana Shire Council WHS Induction (1hr)
- Provide SWMS and risk assessment
- Adhere to safety measures

## Community Engagement

The Lawgi Hall Association plan to host a community market day to celebrate the completion of this artwork. This event may be timed with the delivery of the artwork to have the artist at work during the event, or for the artist to be present to engage with the community. Artists are asked to outline other ways they might like to engage with the community in addition to completing the artwork.

The artist may also be required to engage with local media: print, radio or tv/news, as well as visitors to the site.

## Accommodation

Banana Shire Council accommodation can be arranged for artists travelling to Banana Shire. Please indicate in the application if this would be required.

### **Project Dates**

Ideally this project will be completed by end September 2018, however please indicate your availability for the remainder of 2018 in the application. The project dates will be determined by artist availability and suitability to the Lawgi Hall Association.

### **Materials and Equipment**

The selected artist will be required to provide a list of required materials and equipment to complete this project. Items to consider include:

- Paint: colours and quantities
- Equipment: spray gun, rollers, brushes, buckets etc.
- PPE & safety
- Access equipment: scissor lift, scaffolding etc.

The artist agrees to use materials and methods which will provide a long life span (10 years +).

### **Selection Process**

While Banana Shire Council is co-ordinating this project, the selection of artist and design is determined by the Lawgi Hall Association. The artist will be required to provide designs and undertake an approval process with the Association prior to beginning the artwork.

### **Artist Agreement**

An artist agreement will be developed by the selected artist including:

- Timeframes
- Title (ownership)
- Copyright
- Future Repairs/Restoration
- Fees and variations due to weather etc.
- Safety requirements

## **Applications**

All applications are to be submitted using the required form with supporting documents attached.

Closing date for submissions: 5pm Friday 13 July 2018

Email applications to: [enquiries@banana.qld.gov.au](mailto:enquiries@banana.qld.gov.au)

## **Enquiries**

Shanna Muston, Arts and Cultural Officer, Banana Shire Council

Phone: 4992 9500

Email: [enquiries@banana.qld.gov.au](mailto:enquiries@banana.qld.gov.au)

# Application Form

Contact Details			
Name			
Phone			
Email			
Postal Address			
	Town		Postcode
Website			

## Artist Statement (max 250 words)

Tell us about your practice, why you are suited to this role and why this brief appeals to you. We are interested in your experience and ability to connect with regional communities.

## Community Engagement

Outline ways that you would be interested in engaging with our community

- Artist Talk
- Practical skills workshop for local artists
- Work with local artist/s in a mentorship arrangement during artwork delivery
- Other:

## Safety/Equipment Qualifications and Experience

- Working Safely at Heights
- Elevated Work Platform (up to 11m)
- Elevated Work Platform (over 11m)
- Paint spray gun
- Other:
- or willingness to obtain necessary safety qualifications

## Availability

- Accommodation in Biloela required

## Attachments

- Artist CV - maximum of 2 pages
- Fees Quote - please provide a quote for the below items:
  - Design consultation process
  - Artist fees (daily rate x anticipated number of days to complete this project)
  - Travel costs – eg. to/from Biloela, to/from Lawgi site each day
  - Meal allowances
  - Workshop or artist talk fees
- Copies of Public Liability Insurance (if applicable)
- up to 5 images of previous work (jpeg, labelled with artist name.title)
- (Optional) Design responses may be submitted, however this is at the artist own discretion, design fees will only be available to the selected artist.

## Signature/Authorisation

Name: \_\_\_\_\_

Signed: \_\_\_\_\_

Date: \_\_\_\_\_

I, the undersigned, certify that:

- I have read and understand the conditions of the artist call out
- The statements in this application are true and correct to the best of my knowledge, information and belief and the supporting material is my own work.
- I have read and understood the Information Privacy and Right to Information Statement and agree to the use and disclosure of information as outlined in the Statement.

### Privacy Statement

Banana Shire Council is collecting your personal information in accordance with the Right to Information and Information Privacy Acts in order to undertake the Lawgi Hall Public Artwork. This information will only be accessed and used by Council officers and members of the assessment panel (Lawgi Hall Association) for the purpose of this project. Personal information such as the names of selected artists will be published as part of this project. Your information will not be given to any other person or agency unless you have given permission or Council is required or authorised by law to do so.

You may access or preview Council's Privacy Policy on Council's web site or by contacting a Banana Shire Council Administration Office. . You may access or preview your personal information held by Council by submitting a written request to the:

Chief Executive Officer  
Banana Shire Council  
PO Box 412  
BILOELA Q 4715