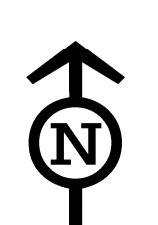


This measures as 14.54m at the manual gauge. 10cm above the level of the 2010 event.

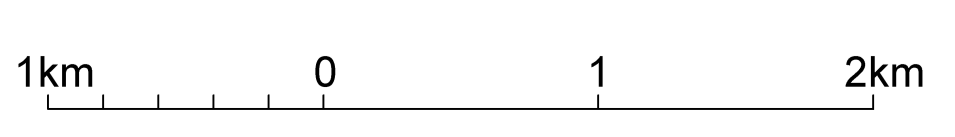
Most of the town is now inundated.

**Legend**

- Watercourse
- TMR Main Roads
- 1% AEP
- Cadastral Property Boundaries

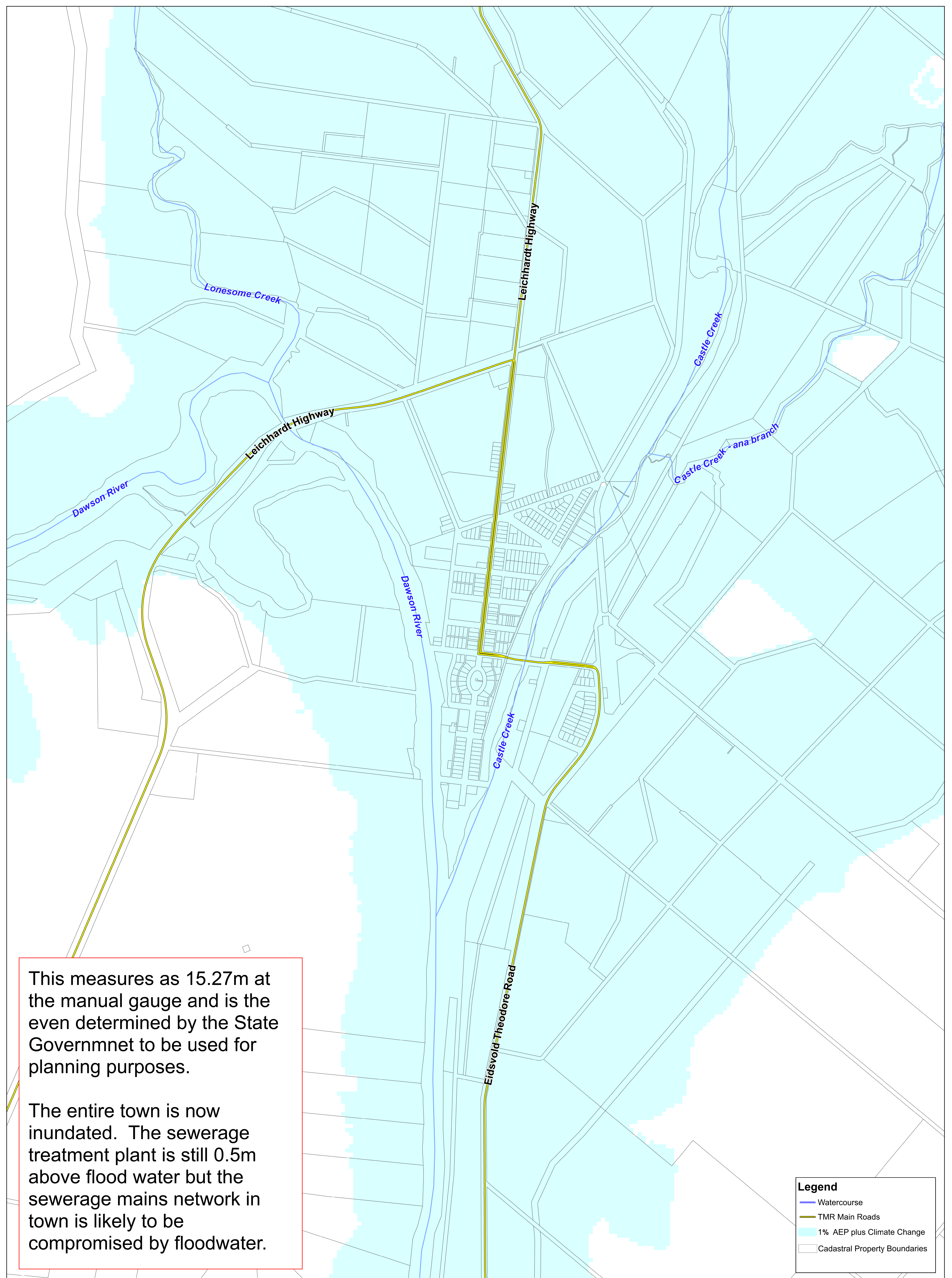


**1% AEP FLOOD**



Scale 1:27,500 @ A0



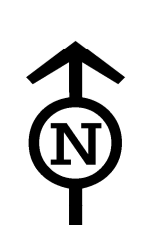


This measures as 15.27m at the manual gauge and is the even determined by the State Governmnet to be used for planning purposes.

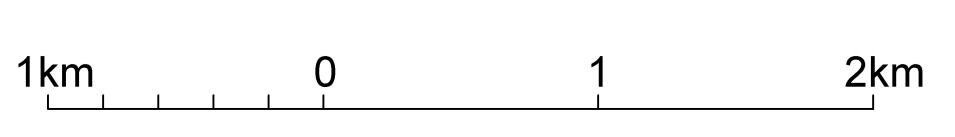
The entire town is now inundated. The sewerage treatment plant is still 0.5m above flood water but the sewerage mains network in town is likely to be compromised by floodwater.

**Legend**

- Watercourse
- TMR Main Roads
- 1% AEP plus Climate Change
- Cadastral Property Boundaries

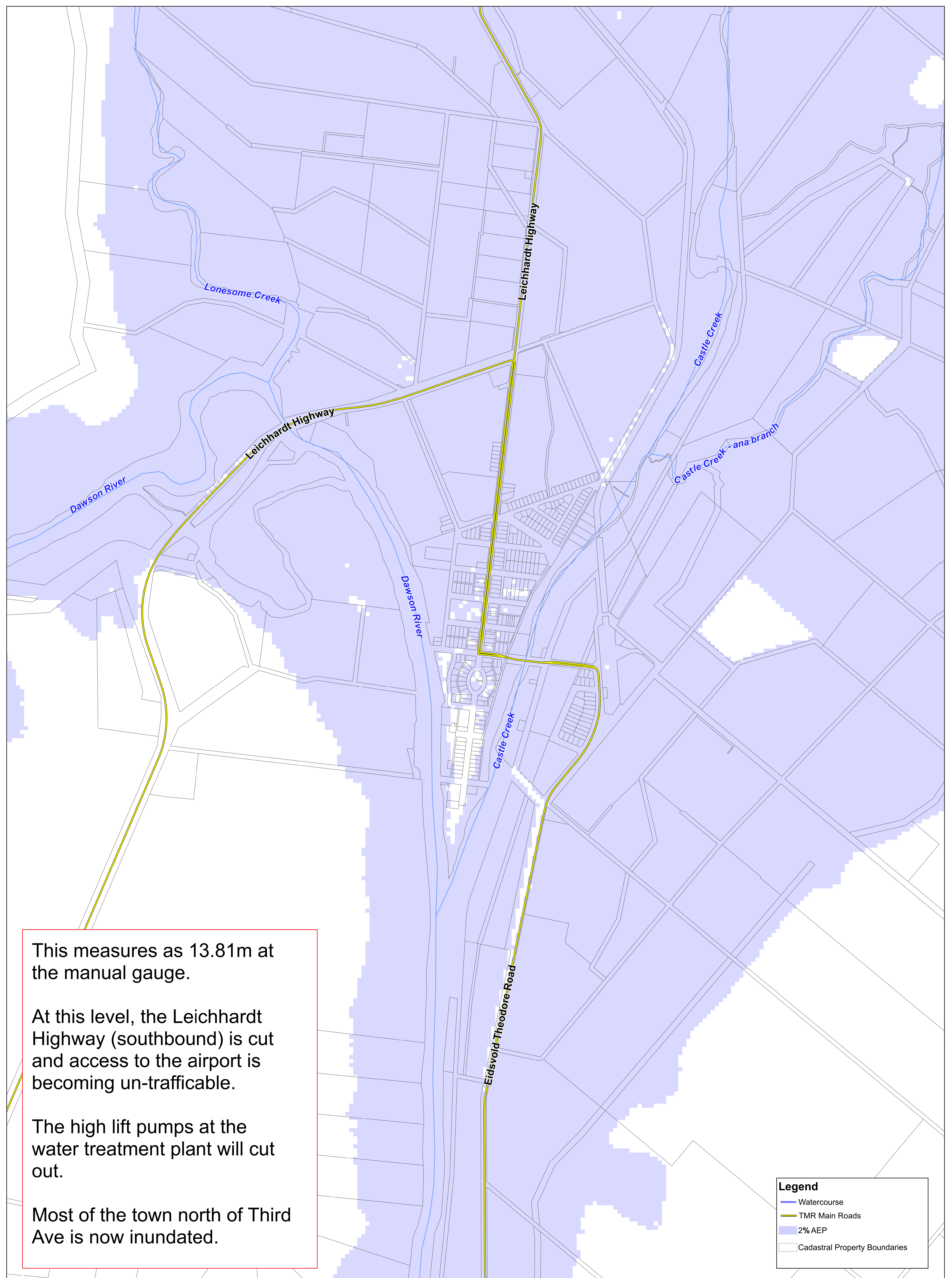


**1% AEP FLOOD PLUS CLIMATE CHANGE**



Scale 1:27,500 @ A0





This measures as 13.81m at the manual gauge.

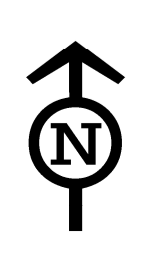
At this level, the Leichhardt Highway (southbound) is cut and access to the airport is becoming un-trafficable.

The high lift pumps at the water treatment plant will cut out.

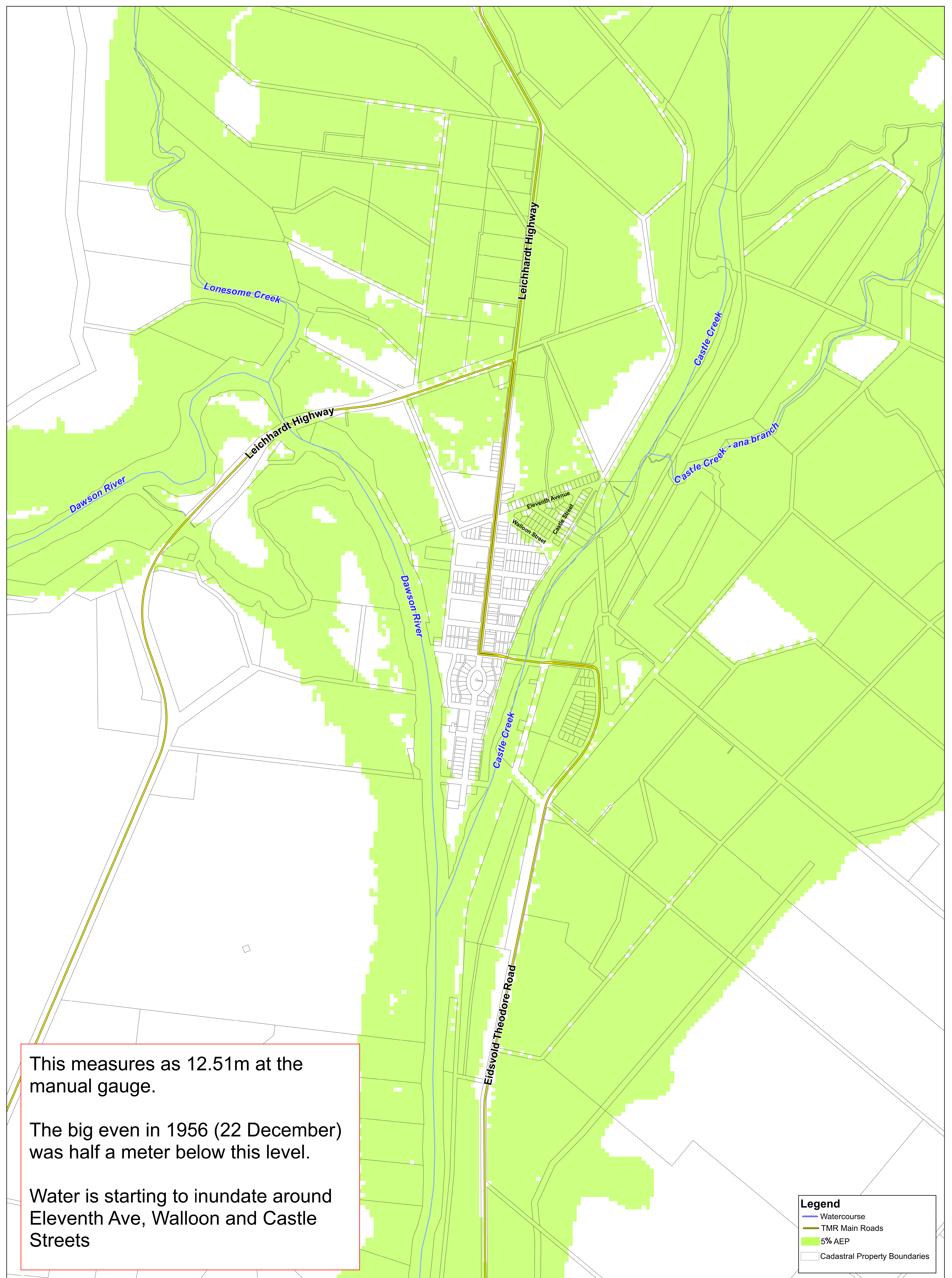
Most of the town north of Third Ave is now inundated.

**Legend**

- Watercourse
- TMR Main Roads
- 2% AEP
- Cadastral Property Boundaries







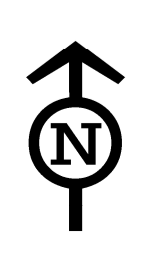
This measures as 12.51m at the manual gauge.

The big even in 1956 (22 December) was half a meter below this level.

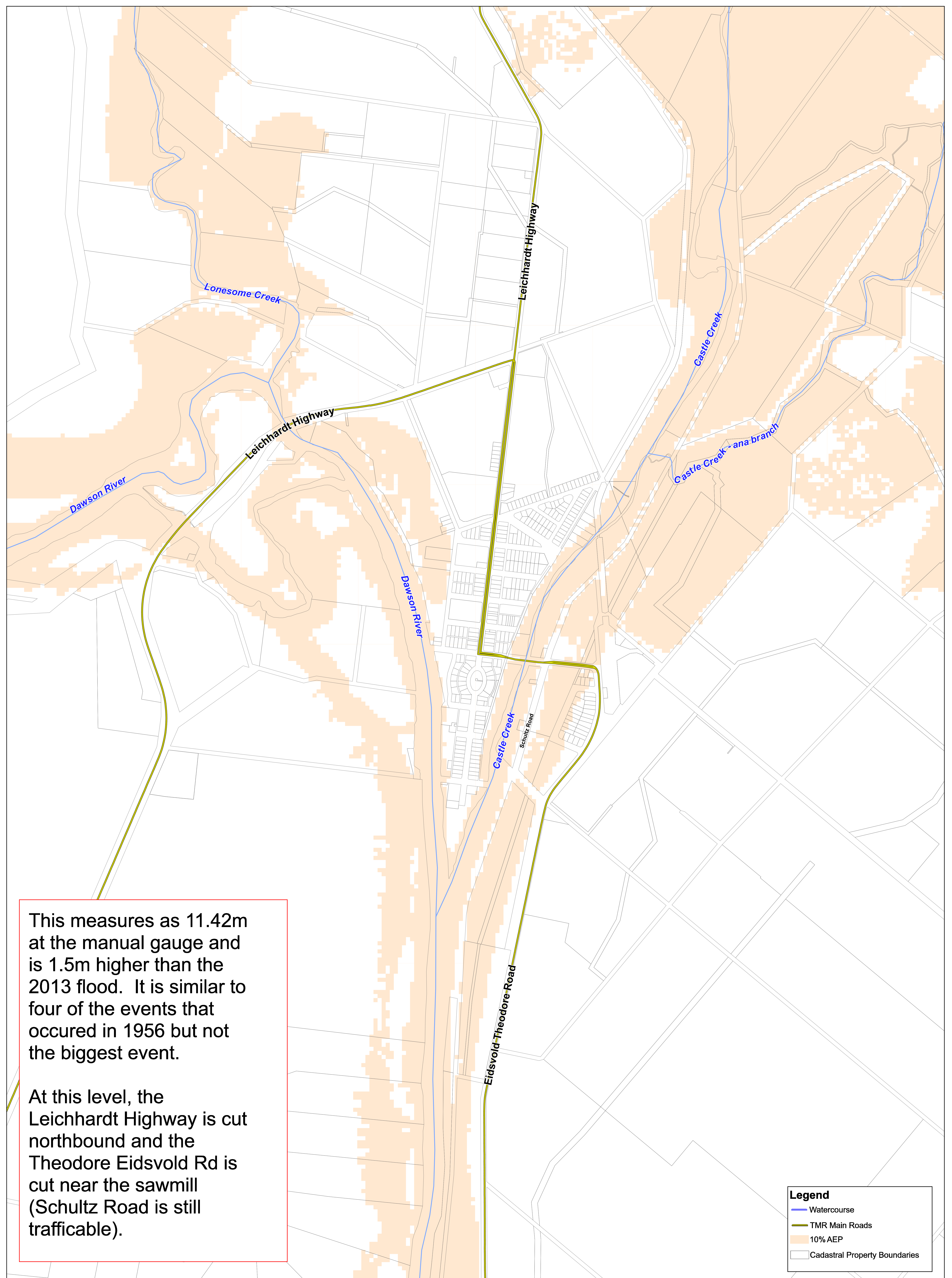
Water is starting to inundate around Eleventh Ave, Walloon and Castle Streets

**Legend**

- Watercourse
- TMR Main Roads
- 5% AEP
- Cadastral Property Boundaries







This measures as 11.42m at the manual gauge and is 1.5m higher than the 2013 flood. It is similar to four of the events that occurred in 1956 but not the biggest event.

At this level, the Leichhardt Highway is cut northbound and the Theodore Eidsvold Rd is cut near the sawmill (Schultz Road is still trafficable).

**Legend**

- Watercourse
- TMR Main Roads
- 10% AEP
- Cadastral Property Boundaries

