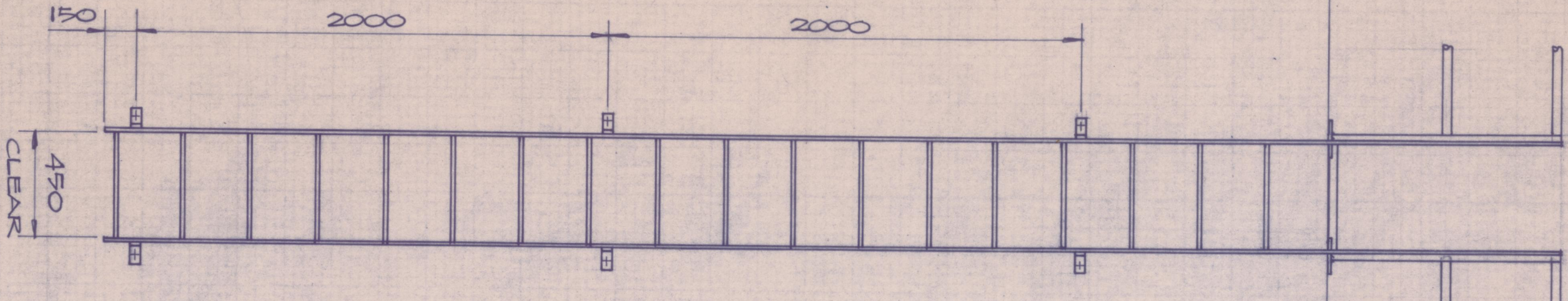
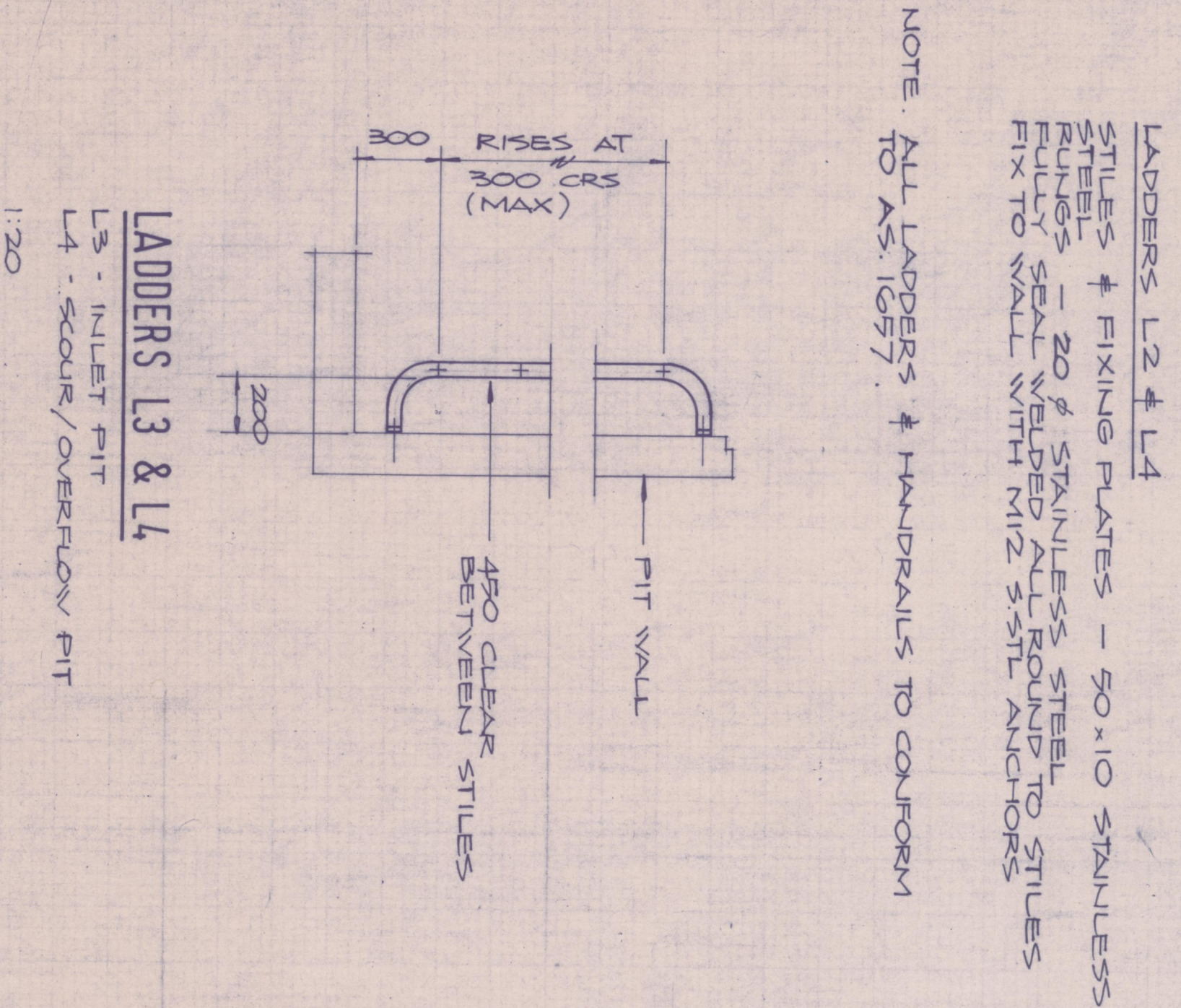


LADDERS L1 & L2
(AT MAN/WOMANHOLE)
1:20



ELEVATION L1
L2 SIMILAR
1:20

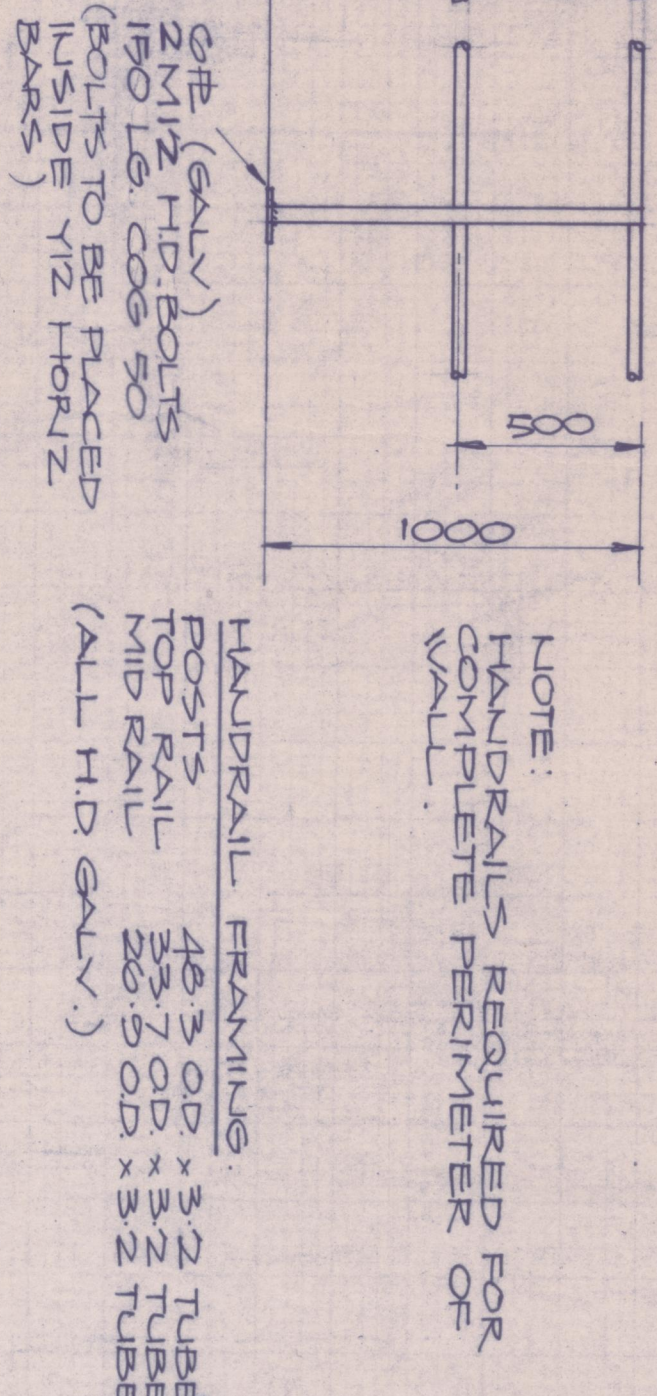


LADDERS L3 & L4
L3 - INLET FIT
L4 - SCOUR/OVERFLOW FIT
1:20

NOTE: ALL LADDERS & HANDRAILS TO CONFORM TO AS 1057.

LADDER FRAMING:
LADDERS L1 & L2:
STILES & FIXING PLATES - 50 x 10 MS. FB
ALLING L1, 20 x 10 MS. FULLY SEAL WELDED
FIT TO WALL WITH M12 CHEMICAL ANCHORS.
NOTE: ALL COMPONENTS TO BE HOT DIPPED GALV.

LADDERS L2 & L4:
STILES & FIXING PLATES - 50 x 10 STAINLESS
STEEL RUNGS - 20 x STAINLESS STEEL
FULLY SEAL WELDED ALL ROUND TO STILES
FIT TO WALL WITH M12 5-STL ANCHORS

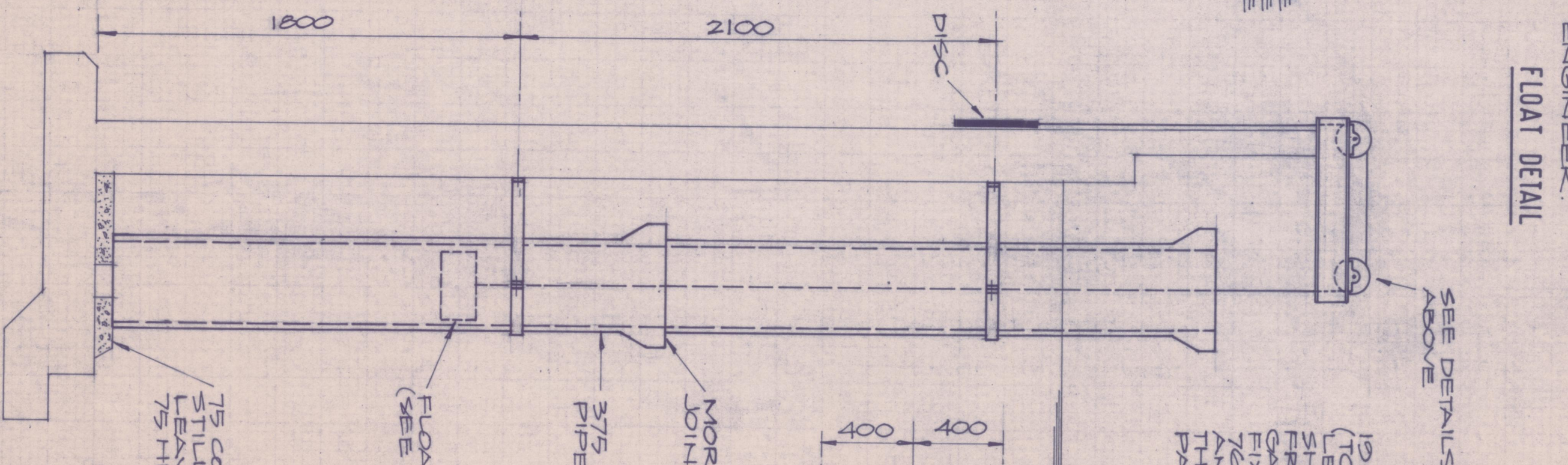


NOTE: HANDRAILS REQUIRED FOR COMPLETE PERIMETER OF WALL.

NOTE: RIVETED & BRAZED. FLOAT TO HAVE FIXED WEIGHTS (TO REMAIN PLUMB) OF 1.2 KG OF APPROVED MATERIAL TOTAL MASS OF FLOAT TO BE 4.3 KG.

NOTE: FLOAT DETAIL TO BE CHECKED BY BUILDER BEFORE FABRICATION. FLOAT MAY BE USED ON APPROVAL BY ENGINEER.

HEIGHT DETERMINED BY FIN. GROUND LEVEL AT O/S TANK



WATER LEVEL INDICATOR
1:20

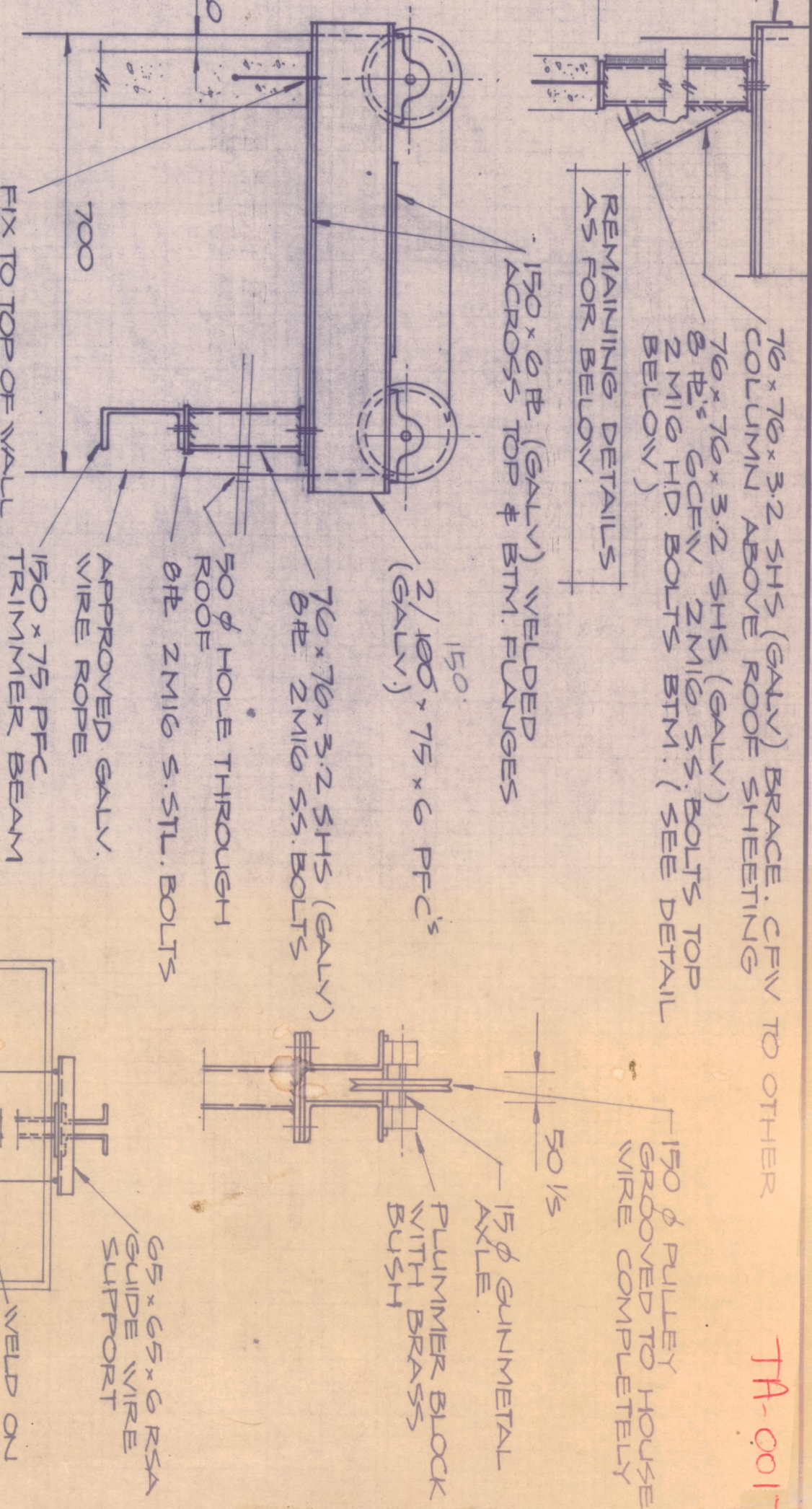
OUTSIDE ELEVATION
1:20

12mm MARINE PLY FRAME (TO ACCOMMODATE TANK LEVEL MARKINGS - AS SHOWN ON O/S ELEVATION) FRAME WITH WELDED LIGHT GALV ANGLE TO PERIMETER. FIX TO HANDRAILS & WELDED ON ANGLE CLAYS. BOLT THROUGH PLY PAINT ON MARKINGS.

SEE DETAILS ABOVE

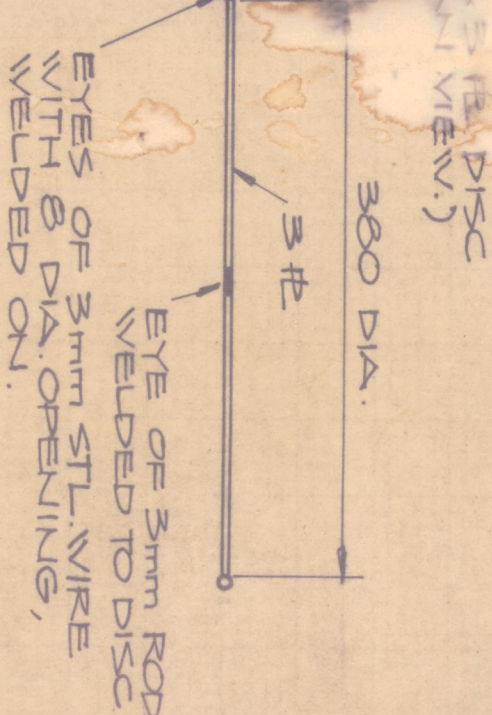
FIX TO TOP OF WALL WITH 2 M16 HD BOLTS 350 LG TO CGS OF 1/2 INCH HORIZ BARS

PULLEY DETAILS
1:10



NOTE: DISC, NUMBERS & MARKINGS ON WALL TO BE PAINTED BLACK. 1500 WIDE WHITE BACKGROUND STRIP TO BE PAINTED ON WALL.

PLAN ON DISC
1:10



Revisions		Issue Date	
A	Original Issue	6/30	

		G J Brandon & Associates Pty Ltd CONSULTING ENGINEERS CHINCHILLA ROMA	
TAROOM SHIRE COUNCIL CLEAR WATER STORAGE AUGMENTATION FABRICATED STEELWORK & WATER LEVEL INDICATOR		JOB NO. 90-229 NO. 7 OF 7 PLANS PLANNING NO. 9022907	
Drawn	JW	SCALE	FULL SIZE A1
Designed	BAP		1:20
Checked	JL		1:10
Approved	[Signature]		