



# INVESTOR PROSPECTUS 2022





# CONTENTS

Forward	6
About Banana Shire	7
The Banana Shire and investment	8
Region's census stats	10
Banana's diverse economy	12
Shire Map - Agriculture	14
Shire Map – Transport Infrastructure	15
Shire's assets and conditions	17
Strong government linkages	18
A renewable opportunity	19
Region's project pipeline	20
Shire Map – Existing resources & renewable energy projects	21
Banana Shire is ready for business	22
Contact	24





# AN INVITATION TO YOUR FUTURE



## Treasurer's opening foreword

Queensland is without a doubt the best place to invest.

Our decisive response through the pandemic resulted in the fastest economic recovery in Australia. Now, Queensland is in the enviable position to capitalise on its advantages and drive the next phase of growth.

With an already strong and diversified economy, the Queensland Government is committed to creating even more jobs in more industries. To help realise this goal, we have a heightened focus on attracting and supporting new investment, right across the state.

We have one of the most decentralised populations in Australia and we want to ensure we have the sustainable industries and jobs that best support our regional and rural communities.

Whether your interests are in traditional or emerging industries including renewable energy, resources, agri-business, advanced manufacturing, food processing, resource recovery or tourism, I invite you to explore the wealth of opportunities that abound in the heart of Central Queensland.

There has never been a better time to invest in Queensland, and there has never been a better time to invest in the Banana region.

**The Honourable Cameron Dick MP**  
Treasurer  
Minister for Trade and Investment



## The Hon Mick de Brenni MP Minister for Energy, Renewables and Hydrogen and Minister for Public Works and Procurement

### Power for generations

The Banana Shire is blessed with incredible natural resources, but it's the people themselves, that are the region's greatest asset.

For generations, they have built our state as a powerhouse of resources and energy, and now they are the key ingredient to building a new clean, reliable and affordable energy system.

The Queensland Energy and Jobs Plan will unleash 100,000 new industrial jobs in energy generation, manufacturing, hydrogen, and critical minerals mining.

With its powerhouse pedigree, the Banana Shire is in the box seat.

64,000 of those jobs will directly and indirectly build the Queensland SuperGrid, construct 22GW of new renewable energy generation, and transform our coal-fired power stations into regional Clean Energy Hubs, securing ongoing local industry and jobs.

Our nation-building plan delivers job security for our energy system workers, and importantly, around 95% of this \$62 billion plan will be invested in regional Queensland.

Our plan also commits to partnering with the region to ensure it shares the benefits and opportunities created by this energy transformation.

Collectively we have worked hard to build a publicly owned energy system, and by keeping it that way, we can ensure our energy transition is orderly and fair.

There has never been a more exciting time to be living, working, and investing in the Banana Shire.

Together, we can take pride in building a clean, reliable and affordable energy system that delivers power for generations.

**The Hon Mick de Brenni MP**  
Minister for Energy, Renewables  
and Hydrogen and Minister for  
Public Works and Procurement



# ABOUT THE SHIRE



## Mayor's Foreward

From our humble agribusiness and resources origins, Banana Shire has risen as an economic powerhouse to lead the industries of the future: decarbonised economy, agriculture, food production and processing, resources, energy, renewables, manufacturing, and industry.

The Banana Shire's underlying comparative advantage is its proximity to neighbouring service centres, a skilled workforce that services existing industry, transport infrastructure, a surplus of industrial zoned land and rich agriculture pastures. Not to mention the region boasts five aerodromes, with one offering weekly commercial passenger flights.

We are proud to open our well-established Shire to emerging industries like renewable energy and resource recovery as well as traditional businesses like advanced agriculture, manufacturing and tourism.

This prospectus provides an overview of the investment-ready opportunities available for industry in the Banana Shire and to support proactive management of growth into well-planned precincts.

**Mayor Neville Ferrier**



Callide Manufacturing Company (CMC) Biloela



Hospital staff at Biloela Hospital



Cotton farm, Theodore

## Banana Shire, Central Queensland's energy powerhouse

Spanning 28,577 square kilometres the Banana Shire is located in Central Queensland 560 km northwest of Brisbane. The Shire is just over four times the size of its municipal neighbour Rockhampton and twice the size of Gladstone.

The main population centre is the town of Biloela, with Moura and Taroom being other significant urban centres in the Shire. Banana, Baralaba, Dululu, Goovigen, Jambin, Thangool, Theodore, Wowan and Cracow comprise the remaining towns of the Shire.

Banana Shire, Central Queensland's energy powerhouse, is strengthening its position with the integration of large-scale renewable energy facilities - providing a strong foundation for growth. Banana region's resilience is underpinned by a diverse mix of industries that include: resources (gold and coal); agriculture; power generation (coal and new energy); food production; manufacturing; waste recovery and services.

Banana Shire is experiencing significant interest from investors seeking a resilient economy, affordable land, skilled workforce, established infrastructure and a business-friendly local government.



# BANANA SHIRE & INVESTMENT



## Banana Shire Council support

- Facilitate the planning process through a guided pre-application meeting with the Planning Department (subject to required planning approval).
- Provide proponents with a custom list of local suppliers in the region.
- Facilitate relevant connections between the proponent and key government agencies.
- Advise of available government grants and incentive programs.

## State and Federal Government support

- Queensland Jobs Fund -  
Learn more at [www.qld.gov.au](http://www.qld.gov.au)
- Industry Partnership Program -  
Learn more at [www.qld.gov.au](http://www.qld.gov.au)
- Manufacturing Hubs Grant Program -  
Learn more at [www.rdmw.qld.gov.au](http://www.rdmw.qld.gov.au)
- Qld Renewable Energy & Hydrogen Jobs Fund  
Learn more at  
[www.statedevelopment.qld.gov.au/queensland-jobs-fund](http://www.statedevelopment.qld.gov.au/queensland-jobs-fund)

\* State and Federal Grant funding is subject to opening and closing dates.



CS Energy Callide  
Power Station, Biloela



# “Banana Shire is Ready for Business”

## The Shire of Opportunity

Australian Mungbean Company, Biloela

2021 Census Data	
<b>People</b>	<b>14,513</b>
Median age	38
Male	7,463
Female	7,051
<b>Employment</b>	
Full-time	4,738
Part-time	1,757
Away from work	555
Unemployed	201
Median Weekly Income	\$1,766
<b>Industry of Employment</b>	
Beef Cattle Farming (Specialised)	898
Coal Mining	862
Meat Processing	255
Local Government Administration	246
Fossil Fuel Electricity Generation	207
<b>Occupation</b>	
Managers	1,377
Technicians and Trades Workers	1,096
Machinery Operators and Drivers	1,031
Labourers	1,009
Professionals	747
Clerical and Administrative Workers	658
Community and Personal Service Workers	536
Sales Workers	436
<b>Median Weekly Income</b>	
Household	\$1,766

The information above has been collected from the 2021 Australian Census.

# POPULATION

IN THE 2021 CENSUS, THERE WERE  
**14,513 PEOPLE**  
IN THE BANANA SHIRE

ABORIGINAL AND/OR  
TORRES STRAIT ISLANDER PEOPLE MADE UP  
**5.1%**  
OF THE POPULATION



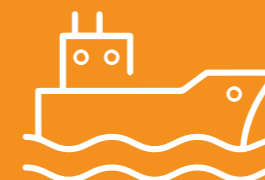
**51.4%**

MEDIAN AGE  
**38**



**48.6%**

FAMILIES  
**3,569**



**1.5 HOURS TO THE**  
PORT OF GLADSTONE



**1.5 HOURS TO**  
ROCKHAMPTON



**1 HOUR DIRECT**  
FLIGHT  
FROM THANGOOL  
TO BRISBANE



**6 HOUR DRIVE**  
TO BRISBANE



CONNECTIONS TO  
RAIL TRANSPORT



# BANANA'S DIVERSE ECONOMY



## Resources

Aeris Resources - Cracow Gold Operations. Santos (GLNG). Batchfire Resources. Anglo American Dawson Mine (Coal). Baralaba Coal Mine. Queensland Nitrates Pty (QNP). WestSide Corporation (Gas). Parkside Timber. Castle Creek Quarry. Fairview Quarry. Westwood Quarry. Yalkara Quarry. Kianga Quarry.



## Food Processing

Teys Australia Biloela. Aussie Squab.



## Grain Processing & Exporting

Allenden Seeds. Australian Mungbean Company. GrainCorp. Williams Stock Feeds.



## Agriculture

Queensland Cotton Gin. BettaPork. Beef grazing. Intensive livestock. Horticulture – herbs, grains, cotton, lucerne. Dryland cropping. Irrigation cropping. Biloela Saleyards. Moura Saleyards. Taroom Clearing Dip. Cattle feedlots.



## Manufacturing

CMC Callide Manufacturing. Launchbury's Engineering. Elite Hydraulics. G&S Engineering Services. Multi Farming Systems. Bock Engineering.



## Transport & Logistics

Aurizon's Moura Coal Rail System. Toll Ipec. Followmont. JF Geary Roadway. Future Fuel Distributors. Banana Shire Council operates five (5) aerodromes, being Thangool; Theodore; Taroom; Moura; and Baralaba.



## Energy (Traditional)

CS Energy - Callide Power Station. Queensland Gas Pipeline.



## Energy (New Industry)

Moura Solar Farm. Banana Range Wind Farm. Specimen Hill Wind Farm. Boulder Creek Wind Farm



## Resource Recovery (New Industry)

Novum Tyre Recycling Facility. Solar Recovery Corporation.



## Primary Health Care

CQ Rural Health. Anglicare Central Queensland. Community Resource Centre (NDIS, special needs). Wowan/Dululu Multi-Purpose Centre. Multiple private practices exist throughout the district along with medical centres.



## Secondary Health Care

CQ Health (Biloela Hospital). Moura Multipurpose Health Service. Theodore Multipurpose Health Service. Taroom Hospital. Baralaba Multipurpose Health Service.



## Aged Care

Baralaba Community Aged Care. Moura Retirement Village. Anglicare Central Queensland - Biloela. Southern Cross - Leichhardt Villa Retirement Village Taroom. Blue Care - Callide Valley. Wahrenonga Retirement Village Biloela. Theodore Multipurpose Health Service.



## Water

SunWater - Callide Valley Water Scheme. Dawson Valley Water Supply Scheme. Theodore Channel Irrigation System.



## Services

Trades that have major industry capabilities. Retailer. Automobile. Machinery & parts. Shopping Centre Precinct.



## Education

Multiple childcare & kindergarten facilities. 10 x primary schools (Prep to year 6). 3 x Schools (Prep to year 10). 3 x secondary schools (Year 7 to Year 12).



## Post-Secondary Education & Training

Apprentices & Trainees Queensland (Biloela)

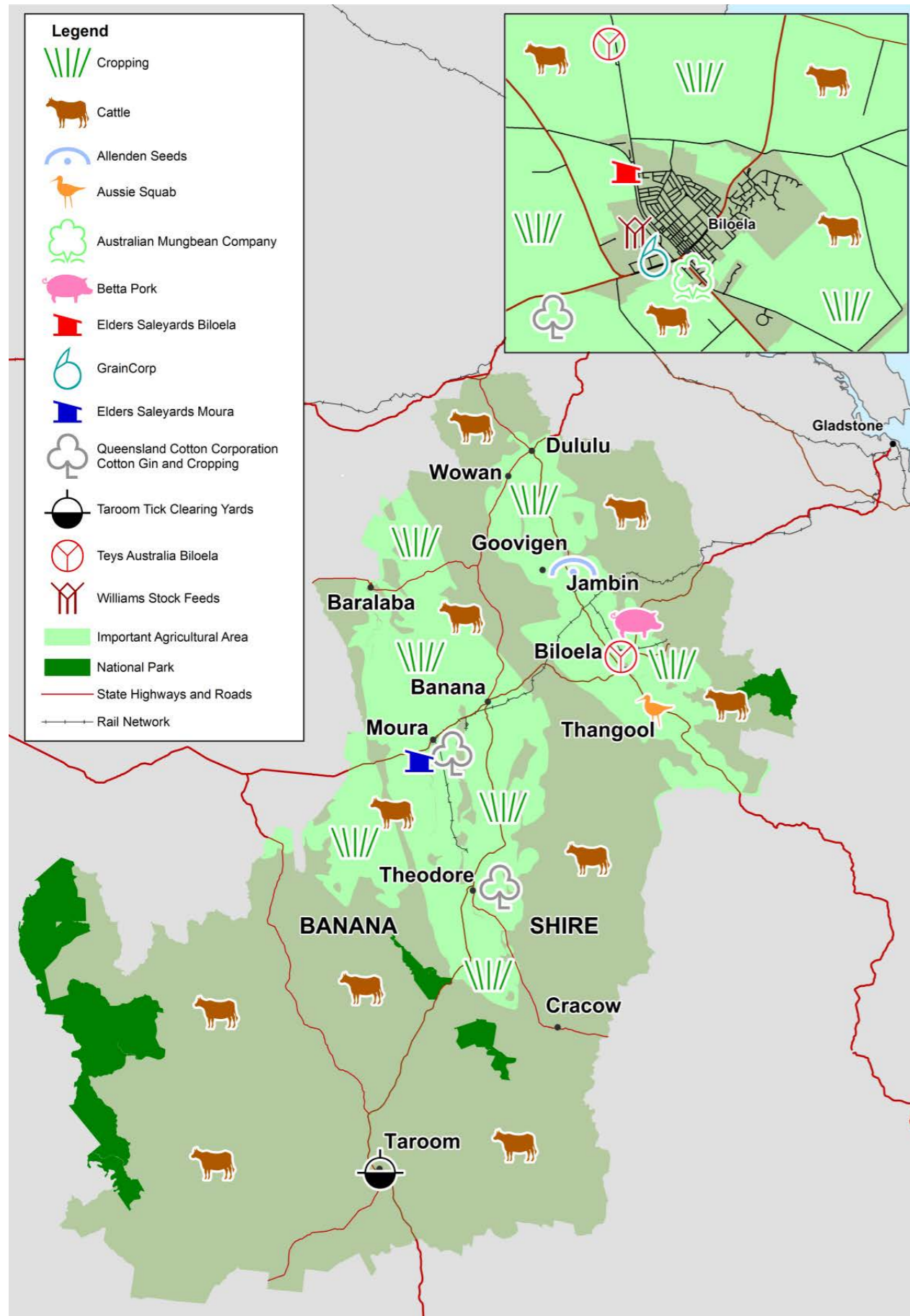


## Tourism & Accommodation

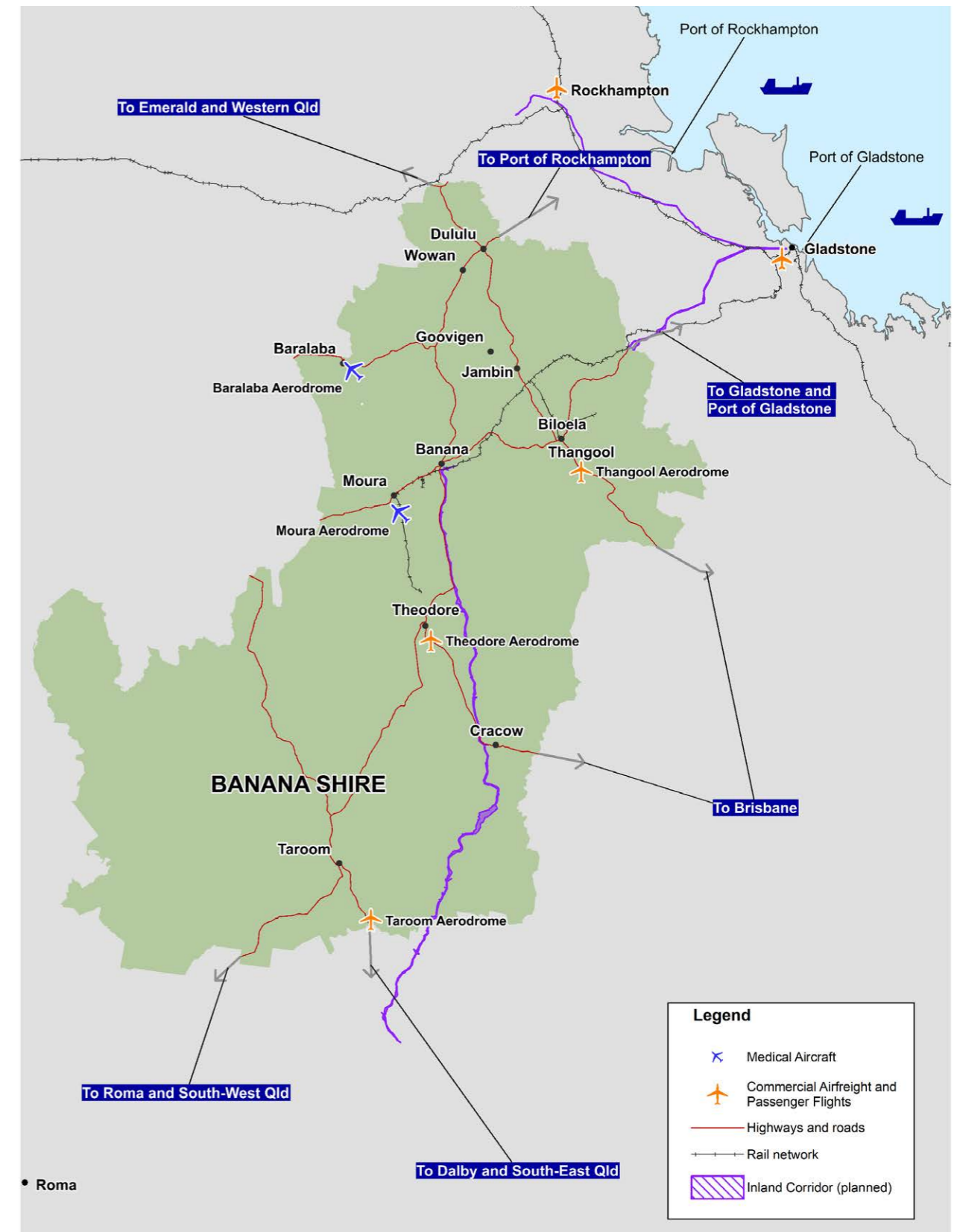
Banana region has approximately 43 accommodation providers ranging from hotels, motels to caravan parks. Tourist attractions include national parks, lakes, rivers, gorges, fishing, museums and a regional art gallery.



# SHIRE MAP - AGRICULTURE



# SHIRE MAP - TRANSPORT INFRASTRUCTURE



\* **Commercial / Passenger flights:** Thangool Aerodrome accommodates commercial flights through Link Airways, providing a service four (4) days a week. Both Taroom and Thangool Aerodromes provide frequent chartered flights. All aerodromes accommodate medical aircraft operations by the Royal Flying Doctor Service and the Aerial Ambulance.





Link Airways operates commercial flights directly to Thangool aerodrome from Brisbane 4 days per week

# SHIRE'S ASSETS & CONDITIONS



## Climate:

Banana Shire has a warm subtropical climate, with hot to warm temperatures all year round. Hot season runs from November to March, with an average daily temperature above 31°C. Cool season runs from May to August, with an average daily temperature below 24°C. On average the region receives 655 mm of rainfall each year.



## Land use:

Diverse land uses include residential, commercial, industrial, agricultural, mining, forestry, park, and other natural land uses.



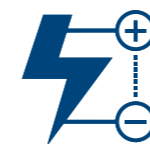
## Water supply:

Dawson River, Callide Dam and Kroombit Dam.



## Irrigation:

Callide Valley Water Scheme. Dawson Valley Water Supply Scheme. Theodore Channel Irrigation System.



## Electrical infrastructure:

Electricity is generated at the Callide Power Station located in the Banana region and fed into a transmission network, managed by Powerlink.



## Resource sector infrastructure:

Industry and mining.



## Airports:

Banana Shire Council owns and operates five aerodromes: Thangool; Theodore; Taroom; Moura; and Baralaba.

The largest aerodrome in the Shire is Thangool Aerodrome, that offers four passenger flights each week between Thangool and Brisbane.

**Thangool Aerodrome** is located 11km south from Biloela town centre (a 15-minute drive) on the A3 Highway.



## Skilled population

The region boasts a highly skilled workforce able to respond to changing environments and pursue commercial opportunities.



# STRONG GOVERNMENT LINKAGES



## Local Government

- Banana Shire Council

## Queensland Government

- Queensland Small Business Commissioner
- Department of Agriculture and Fisheries
- Department of Children, Youth Justice, and Multicultural Affairs (DCYJMA)
- Department of Communities, Housing and Digital Economy
- Department of Education
- Department of Employment, Small Business and Training
- Department of Environment and Science
- Queensland Health
- Department of Justice and Attorney-General
- Queensland Police Service and Queensland Fire and Emergency Services
- Department of the Premier and Cabinet (Office for Rural and Regional Queensland).

- Department of Regional Development, Manufacturing and Water
- Department of Resources
- Department of Science, Information Technology, and Innovation
- Department of Seniors, Disability Services and Aboriginal and Torres Strait Islander Partnerships
- Department of State Development, Infrastructure, Local Government and Planning
- Department of Transport and Main Roads
- Department of Tourism, Innovation and Sport
- Queensland Treasury
- Trade and Investment Queensland

## Federal Government

- Regional Development Australia Central Queensland
- AusIndustry National
- Recovery and Resilience Agency



Banana Shire Council, Maree Adshead Queensland Small Business Commissioner and local chambers of commerce signing the Small Business Friendly program charter.

# A RENEWABLE OPPORTUNITY

The Banana Shire is poised to play a key role in the Queensland Government's Energy and Jobs Plan, which aims to end the state's reliance on fossil fuels by 70% in 2032. This will transform the Banana Shire into a renewable energy hub.

The long-term plan outlines the integration and connection of solar and wind farms to hydrogen generators and hydro-electric energy storage facilities across the state via a "supergrid".

The Banana Shire is currently the energy powerhouse of Queensland with traditional energy industries looking to transition to renewable energy generation and wind and solar energy projects already setting up in the Shire.

The construction of the renewable energy projects provides an opportunity to grow the local workforce, population, and the need for support services and opportunity for business.

**There has never been a better time to align your business with Banana Shire during Queensland's Energy Transformation.**

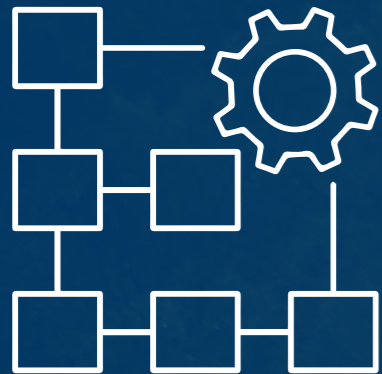
**The Banana Shire can support major undertakings like renewable energy projects thanks to:**

- 1 an established network
- 2 a highly skilled workforce
- 3 a supportive community
- 4 an experienced council





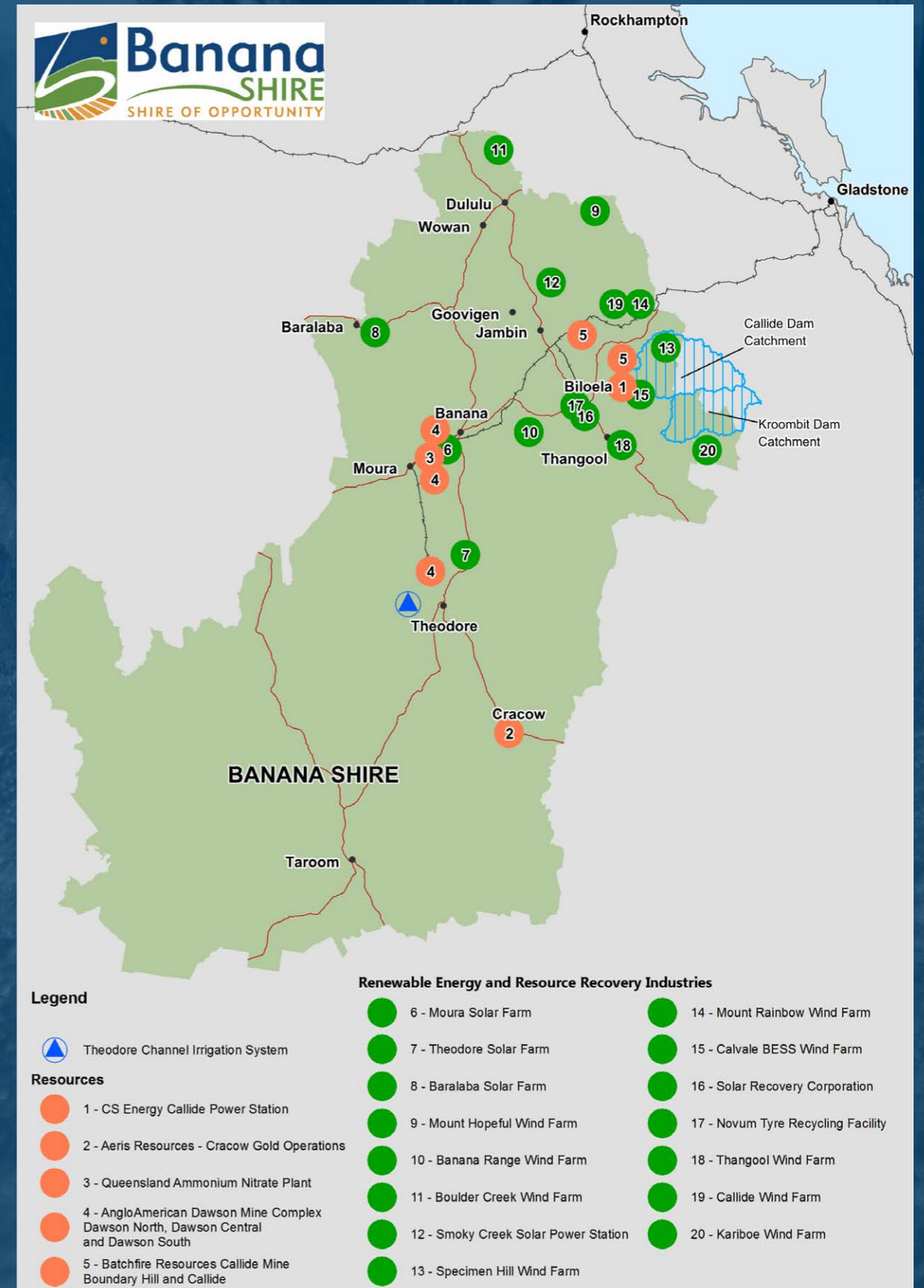
# REGION'S PROJECT PIPELINE



Banana Shire is supporting the emergence and growth of new and existing sectors through its established business ecosystem that supports and rewards innovation.

- Moura Solar Farm (Construction phase)
- Banana Range Wind Farm (Development stage)
- Mount Hopeful Wind Farm (Development stage)
- Boulder Creek Wind Farm (Development stage)
- Specimen Hill Wind Farm (Development stage)
- Smoky Creek Solar Power Station (Approved)
- Mount Hopeful Wind Farm (Pending approval)
- Callide Wind Farm (Pending approval)
- Mount Rainbow Wind Farm (Pending approval)
- Calvale BESS (Pending approval)
- Thangool Wind Farm (Feasibility stage)
- Kariboe Wind Farm (Feasibility stage)
- Baralaba Solar Farm (Pending approval)
- Theodore Solar Farm (Pending approval)
- Inland Rail - Council is advocating for an inland rail to connect Banana's economy to the Port of Gladstone and Toowoomba.
- Queensland Government's proposed Renewable Energy Zone (Upgrade to an integrated smart grid in region)

# SHIRE MAP – EXISTING RESOURCES & RENEWABLE ENERGY PROJECTS





Nikki Boyd MP Assistant Minister for Local Government QLD with Mayor Nev Ferrier at the official opening of Biloela Industrial Estate

**Banana Shire is ready to engage new business to the region and support them in every step of the process. Discover why a growing number of investors, developers and businesses are calling the Banana Shire home.**



# BANANA SHIRE IS READY FOR BUSINESS

**Samuel Agostino**  
Chief Operating Officer,  
Solar Recovery Corporation  
PV Solar Panel Recycling Plant

*The communication with Banana Shire Council has been gold class. Our decision was not made lightly, having scoped out all of Queensland for our business model. After lengthy discussions on a Federal, State and local level, we chose Banana Shire because they looked at the technology required for our business and accepted the challenge.*

*They have provided support to business and staff not only in Biloela but our head office included. I would give them a 10 out of 10 to deal with.*

**Rowan Kendall, Chief Executive Officer & Managing Director,**  
Novum Tyre Recycling Facility Biloela  
*Australia's first rubber recycling plant*

*We chose Banana Shire initially because of the proximity to mining locations and industry hubs of Rockhampton and Gladstone. We knew it was the ideal place for us when we found the availability of suitable industrial land to support the business which we had found difficult to locate in other regions. Dealing with the Mayor Nev Ferrier and having the support of his team also played a big factor in our decision.*

*The Council DA process was insightful and supportive. The communication with Council and the Planning team has been excellent at all levels in each facet of involvement from DA to the scope of future operations.*



# WANT TO INVEST IN BANANA SHIRE?

Banana Shire Council's Economic Development Team is the first point of contact if you are considering purchasing, relocating or establishing a new business in the Banana Shire.

Contact our Economic Development Team on (07) 4992 9500 or email [invest@banana.qld.gov.au](mailto:invest@banana.qld.gov.au) to discuss further.



**Banana**  
**SHIRE**  
SHIRE OF OPPORTUNITY

[www.banana.qld.gov.au](http://www.banana.qld.gov.au)