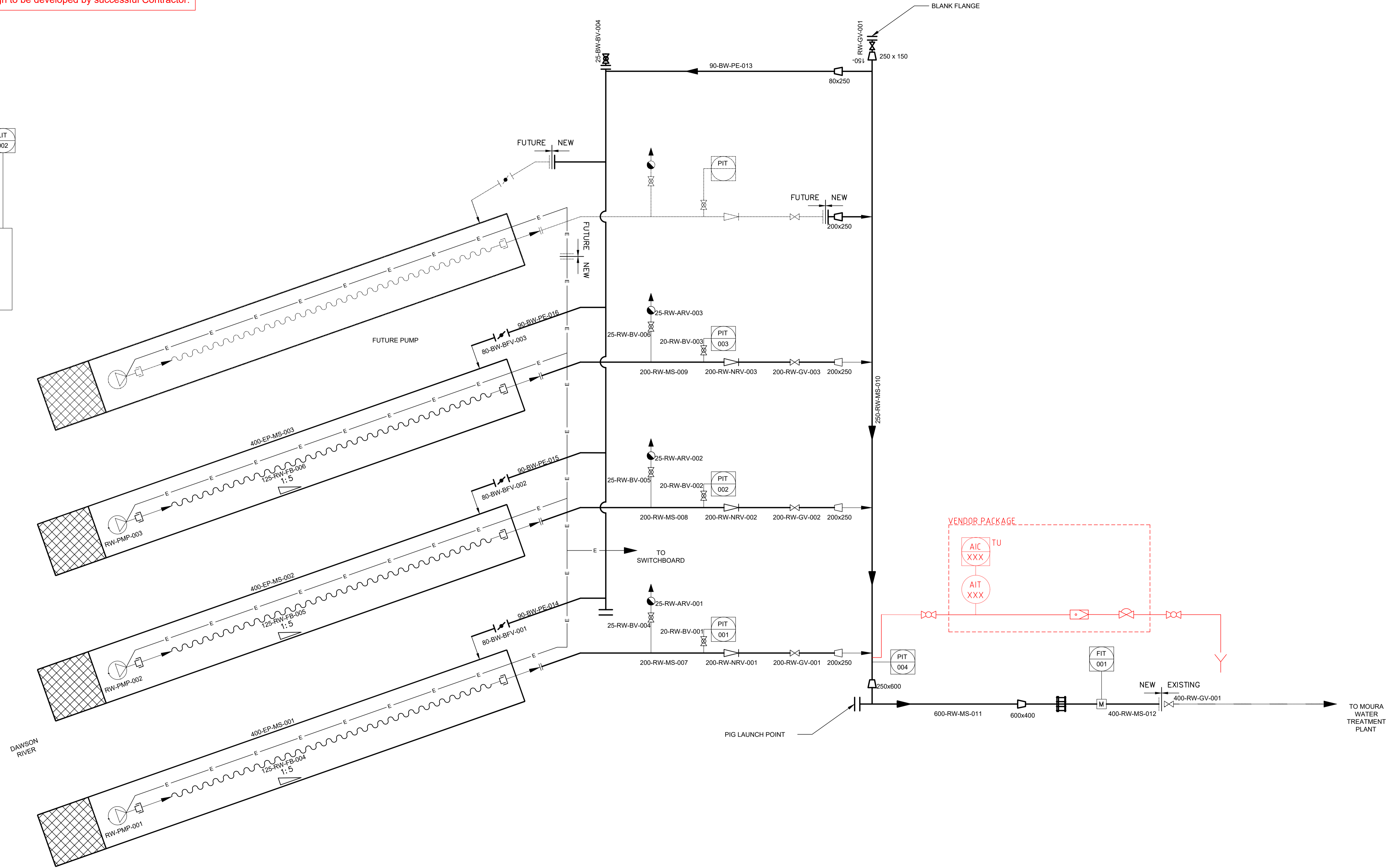
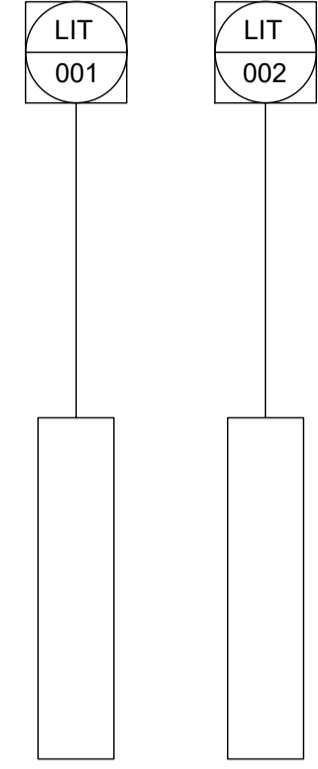


This drawing and red-line mark-ups are a concept design only. Final design to be developed by successful Contractor.



AS CONSTRUCTED

A3

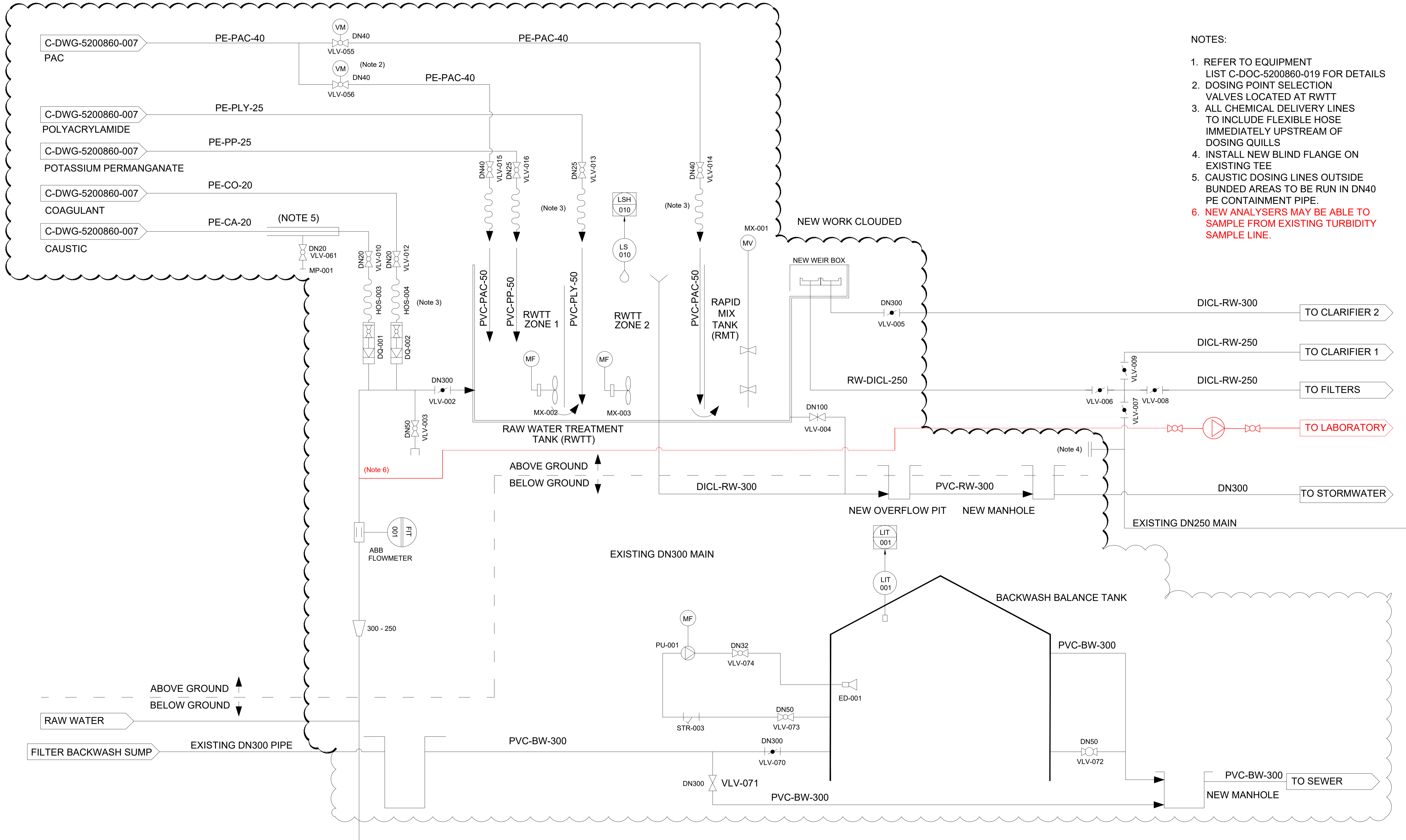
INDEX	DATE	REVISIONS	DRAWN	CHECKED	PASSED	APPROVED BY	RPEQ No.	DATE
AC	18.06.2020	AS CONSTRUCTED	KS	SM	MJ	K.STOJCEVSKI	20523	18.06.2020

19007	MOURA RAW WATER PUMP STATION	SHEET 007 OF 034 SHEETS	SCALE AS SHOWN
PROCESS & INSTRUMENTATION DIAGRAM		REVISION DATE 18.06.2020	REVISION AC
RAW WATER PUMP STATION		DISCIPLINE CODE M	
		DRAWING NO.	
		MRWPS-M-DWG-007	

This drawing and red-line mark-ups are a concept design only. Final design to be developed by successful Contractor.

AS CONSTRUCTED

Signed..... Date...../...../.....



- NOTES:
- REFER TO EQUIPMENT LIST C-DWG-5200860-019 FOR DETAILS
  - DOSING POINT SELECTION VALVES LOCATED AT RWTT
  - ALL CHEMICAL DELIVERY LINES TO INCLUDE FLEXIBLE HOSE IMMEDIATELY UPSTREAM OF DOSING QUILLS
  - INSTALL NEW BLIND FLANGE ON EXISTING TEE
  - CAUSTIC DOSING LINES OUTSIDE BUNDED AREAS TO BE RUN IN DN40 PE CONTAINMENT PIPE.
  - NEW ANALYSERS MAY BE ABLE TO SAMPLE FROM EXISTING TURBIDITY SAMPLE LINE.

0	10/09/2015	ISSUED FOR CONSTRUCTION	M.R.	J.F.	RMT
E	10/09/2015	ISSUED FOR REVIEW	M.R.	J.F.	RMT
D	07/08/2015	100% DESIGN ISSUE	M.R.	J.F.	RMT
C	21/07/2015	100% DESIGN RE-ISSUE	M.R.	J.F.	RMT
B	14/7/2015	100% DESIGN ISSUE	GS	RMT	RMT
1	12/01/2016	AS CONSTRUCTED	M.R.	RMT	RMT
REV	DATE	DETAILS	DRAWN	CHECKD	APPRVD

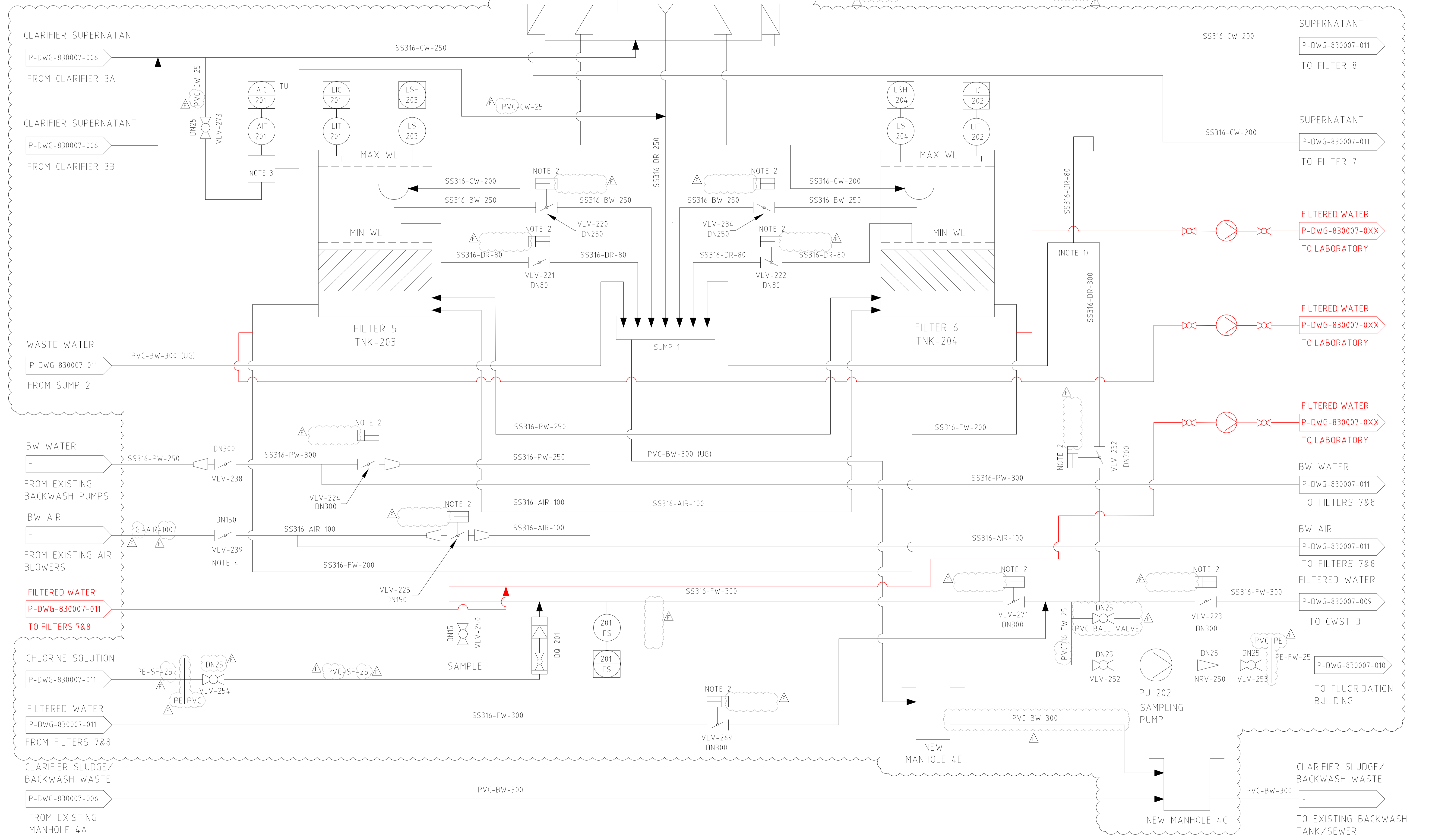
**WSE**  
 WATER SERVICES ENGINEERING PTY LTD  
 Level 8, 269 Wickham St  
 Fortitude Valley, QLD, 4006  
 Phone (07) 3257 1567 Mobile 0414 313 419

**Zinfra**  
 112 DARLINGTON DRIVE,  
 YATALA, QLD 2153  
 PH (07) 3827 8100 FAX (07) 3827 8101  
 www.zinfra.com.au

RWTT/RMT AND BACKWASH BALANCE TANK P & ID		REV NO. 1
MOURA WATER TREATMENT PLANT		
SHEET SIZE A1	DRAWING NO. C-DWG-5200860-008	

This drawing and red-line mark-ups are a concept design only. Final design to be developed by successful Contractor.

- NOTE:
1. PIPE LEVEL MATCHED/MIN WL IN FILTER VESSEL.
  2. ALL PNEUMATIC ACTUATED VALVES HAVE BEEN DRAWN WITH VALVE MOUNTED AIR SUPPLY SOLENOIDS. ALL AIR ACTUATORS ARE MANFOLDED TOGETHER IN A LOCAL CONTROL PANEL WITH INTERCONNECTING TUBING FROM PANEL TO PNEUMATIC ACTUATOR. EACH PNEUMATIC ACTUATOR HAS TWO AIR SUPPLY LINES TO OPEN & TO CLOSE.
  3. EACH ULTRATURB PLUS SC FIELD MOUNTED IN LOCAL ENCLOSURE BENEATH ELEVATED PLATFORM.
  4. TRAIN 3 AIR ISOLATION VALVE LOCATED OUTSIDE CHEMICAL BUILDING.



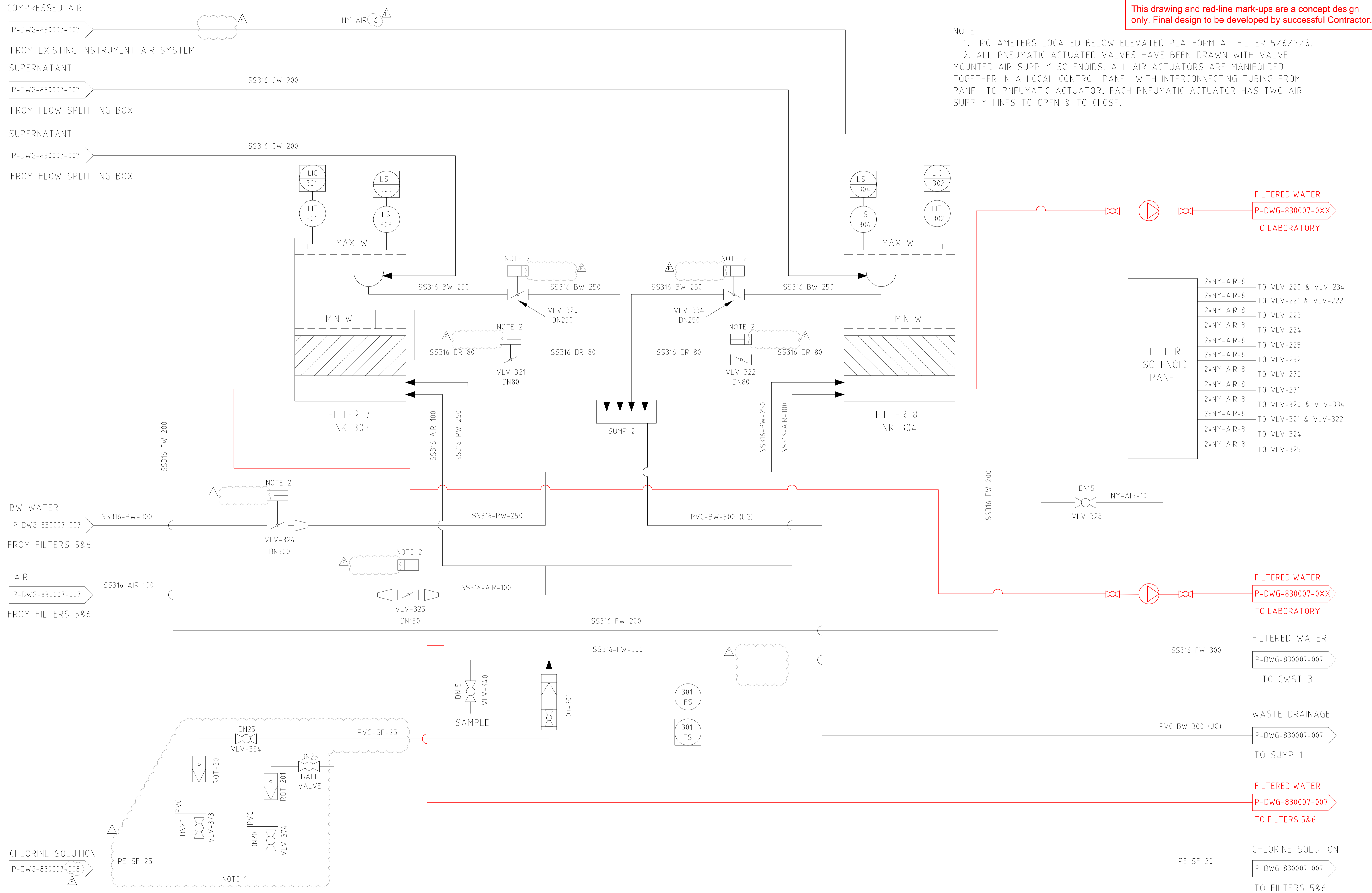
REV	DATE	DETAILS	DRAWN	CHECKD	APPRVD
F	0/02/2019	AS BUILT	WDL	MS	SW
E	17/08/2016	IFC (DELETE FILTERED WATER SCOUR, REVISED PIPE MATERIALS & NOTES)	M.R.	J.F.	RMT
D	15/06/2016	ISSUED FOR CONSTRUCTION	M.R.	J.F.	RMT
C	20/05/2016	ISSUED FOR 100% DESIGN REVIEW	M.R.	J.F.	RMT
B	29/04/2016	ISSUED FOR 80% DESIGN	M.R.	J.F.	RMT
A	04/04/2016	ISSUED FOR 40% DESIGN	M.R.	J.F.	RMT

**WSE**  
 WATER SERVICES ENGINEERING PTY LTD  
 Level 8, 269 Wickham St  
 Fortitude Valley, QLD, 4006  
 Phone (07) 3257 1567 Mobile 0414 313 419

**Zinfra**  
 29 COMMERCE CIRCUIT,  
 YATALA, QLD 4207  
 PH (07) 3827 8100 FAX (07) 3827 8101  
 www.zinfra.com.au

**RAPID GRAVITY FILTERS 586 P&ID**  
 MOURA WTP STAGE 2 AUGMENTATION  
 MOURA WATER TREATMENT PLANT

SHEET SIZE: A1 DRAWING NO: P-DWG-830007-007 REV NO: F



This drawing and red-line mark-ups are a concept design only. Final design to be developed by successful Contractor.

NOTE:  
 1. ROTAMETERS LOCATED BELOW ELEVATED PLATFORM AT FILTER 5/6/7/8.  
 2. ALL PNEUMATIC ACTUATED VALVES HAVE BEEN DRAWN WITH VALVE MOUNTED AIR SUPPLY SOLENOIDS. ALL AIR ACTUATORS ARE MANIFOLDED TOGETHER IN A LOCAL CONTROL PANEL WITH INTERCONNECTING TUBING FROM PANEL TO PNEUMATIC ACTUATOR. EACH PNEUMATIC ACTUATOR HAS TWO AIR SUPPLY LINES TO OPEN & TO CLOSE.

- FILTER SOLENOID PANEL**
- 2xNY-AIR-8 TO VLV-220 & VLV-234
  - 2xNY-AIR-8 TO VLV-221 & VLV-222
  - 2xNY-AIR-8 TO VLV-223
  - 2xNY-AIR-8 TO VLV-224
  - 2xNY-AIR-8 TO VLV-225
  - 2xNY-AIR-8 TO VLV-232
  - 2xNY-AIR-8 TO VLV-270
  - 2xNY-AIR-8 TO VLV-271
  - 2xNY-AIR-8 TO VLV-320 & VLV-334
  - 2xNY-AIR-8 TO VLV-321 & VLV-322
  - 2xNY-AIR-8 TO VLV-324
  - 2xNY-AIR-8 TO VLV-325

REV	DATE	DETAILS	DRAWN	CHECKD	APPRVD
F	04/02/2019	AS BUILT	WDL	MS	SW
E	17/08/2016	IFC (DELETE FILTERED WATER DRAIN, REVISED PIPE MATERIAL & NOTBS)	M.R.	J.F.	RMT
D	15/06/2016	ISSUED FOR CONSTRUCTION	M.R.	J.F.	RMT
C	20/05/2016	ISSUED FOR 100% DESIGN REVIEW	M.R.	J.F.	RMT
B	29/04/2016	ISSUED FOR 80% DESIGN	M.R.	J.F.	RMT
A	04/04/2016	ISSUED FOR 40% DESIGN	M.R.	J.F.	RMT

**WSE**  
 WATER SERVICES ENGINEERING PTY LTD  
 Level 8, 269 Wickham St.  
 Fortitude Valley, QLD, 4006  
 Phone (07) 3257 1567 Mobile 0414 313 419

**Zinfra**  
 29 COMMERCE CIRCUIT,  
 YATALA, QLD 4207  
 PH (07) 3827 8100 FAX (07) 3827 8101  
 www.zinfra.com.au

**RAPID GRAVITY FILTERS 7&8 P&ID  
 MOURA WTP STAGE 2 AUGMENTATION  
 MOURA WATER TREATMENT PLANT**

SHEET SIZE	DRAWING NO.	REV NO.
A1	P-DWG-830007-011	F

