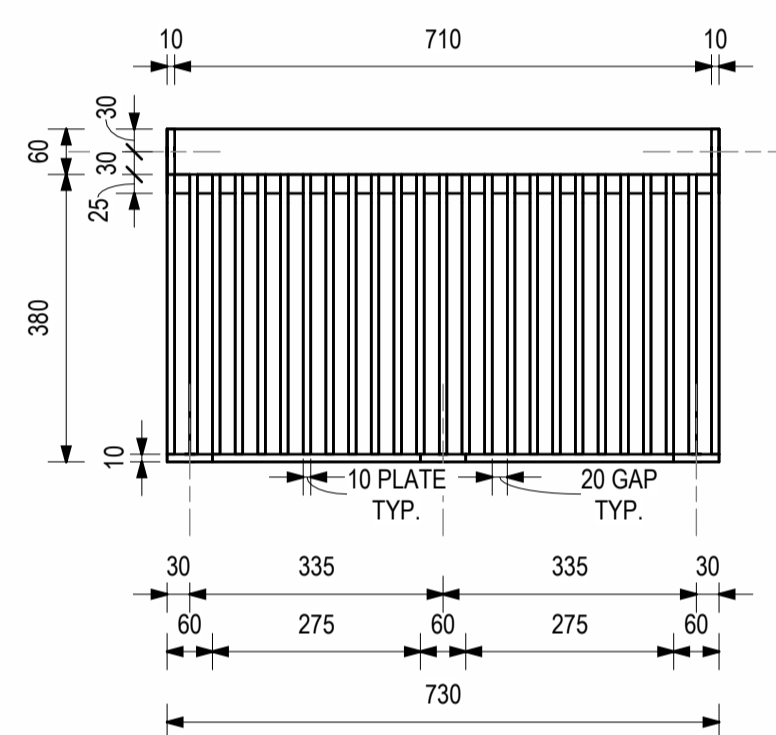
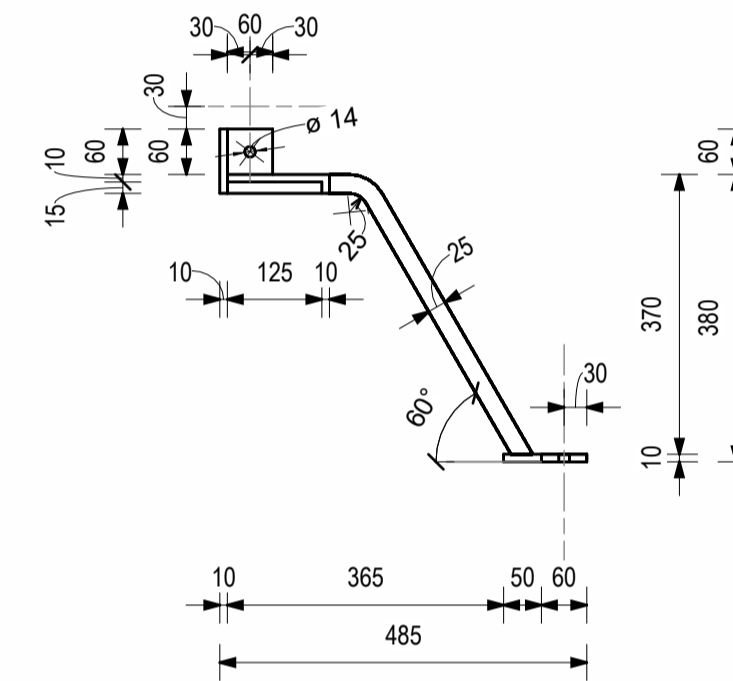


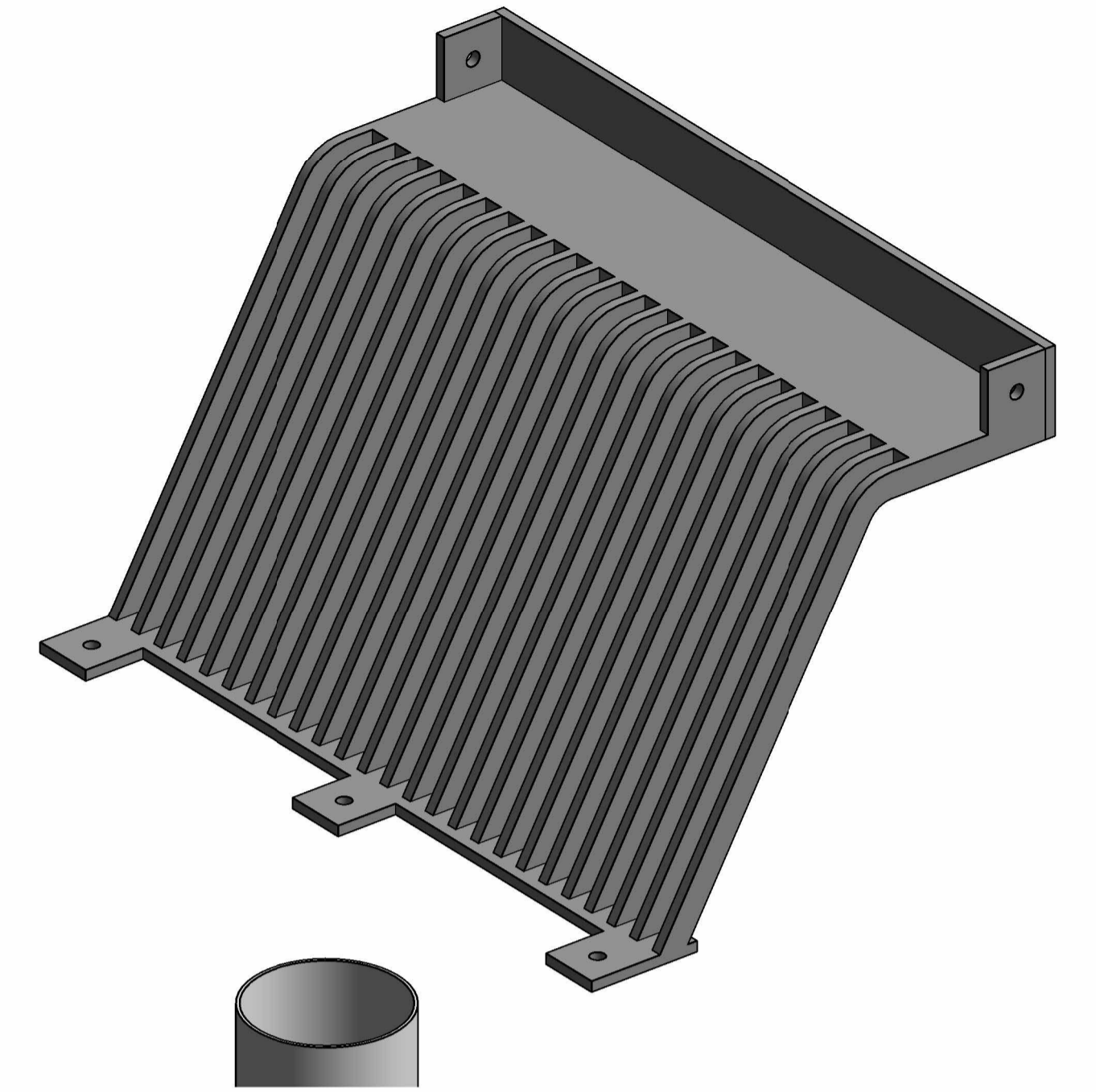
20mm SCREEN BAR PLAN
SCALE: 1 : 10



SECTION 1
1 : 10



SECTION 2
1 : 10



3D VIEW - 20mm SCREEN BAR

SCREEN STEELWORK NOTES

- SS1. ALL STEELWORK TO BE MIN 316 GRADE STAINLESS STEEL.
- SS2. USE PREQUALIFIED WELDING PROCEDURES AND QUALIFIED PERSONNEL IN ACCORDANCE WITH AS1554, SP QUALITY WELDS UNLESS NOTED OTHERWISE. USE AWS E316LXX ELECTRODES AND 3MM CFW UNO. VISUALLY INSPECT ALL WELDS FOR COMPLIANCE.
- SS3. ALL HOLD DOWN BOLTS TO BE HILTI STUD ANCHOR HSA-R M12x175 95/80/45 WITH MINIMUM 90 EMBEDMENT.
- SS4. GROUT PADS ARE TO COMPRISE MAX 20mm THICKNESS OF A PROPRIETARY 40 MPa MIN. NON SHRINK GROUT UNO.

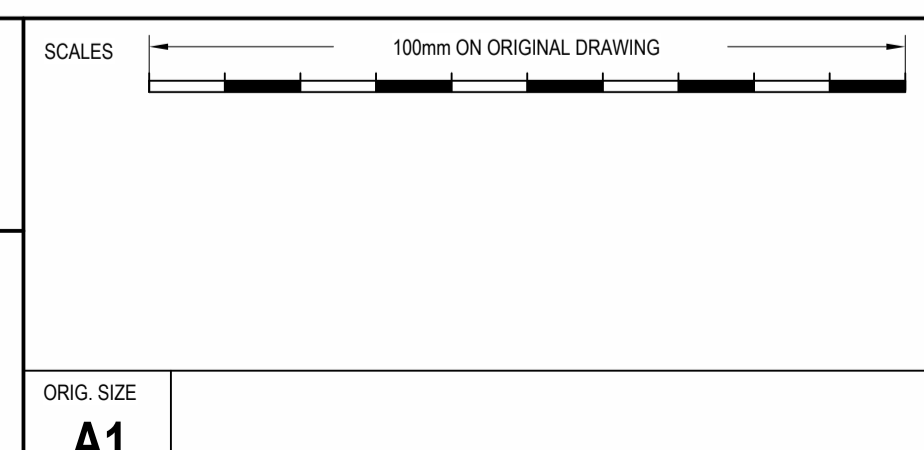
C:\Users\jgordon\OneDrive - GANDEN Pty Ltd\Documents\REVIT FILES\2022-2023\A1_01.dwg

GANDEN
ENGINEERS AND PROJECT MANAGERS

HEAD OFFICE - GOLD COAST
SUITE 106, 30 LAKE ORR DRIVE,
VARSVITY LAKES, QLD 4227

T 07 5647 6052
E enquiries@ganden.com.au

ORIG. SIZE
A1



REV	DESCRIPTION	DATE	DWN	APP
0	ISSUED FOR CONSTRUCTION	XX.XX		
	REVISIONS			

AS CONSTRUCTED | REV

Client

Banana SHIRE
SHIRE OF OPPORTUNITY

NAME: NICK STEER
DATE: 30.09.21
SIGNATURE: [Signature]

DRAWING STATUS	CONSTRUCTION	
TITLE	TAROOM SEWAGE TREATMENT PLANT UPGRADE INLET WORKS BAR SCREEN 20mm DETAIL	
DRAWING NUMBER	TARSTP - DWG- MEC-1001	REVISION 0